



REHABILITATION OF I-95 FROM I-495 TO NORTH OF BRANDYWINE RIVER BRIDGE

PUBLIC WORKSHOP (VIRTUAL)

January 28, 2021 – 6 PM to 7:30 PM



Kiewit



INTRODUCTORY REMARKS

2

TONIGHT'S AGENDA

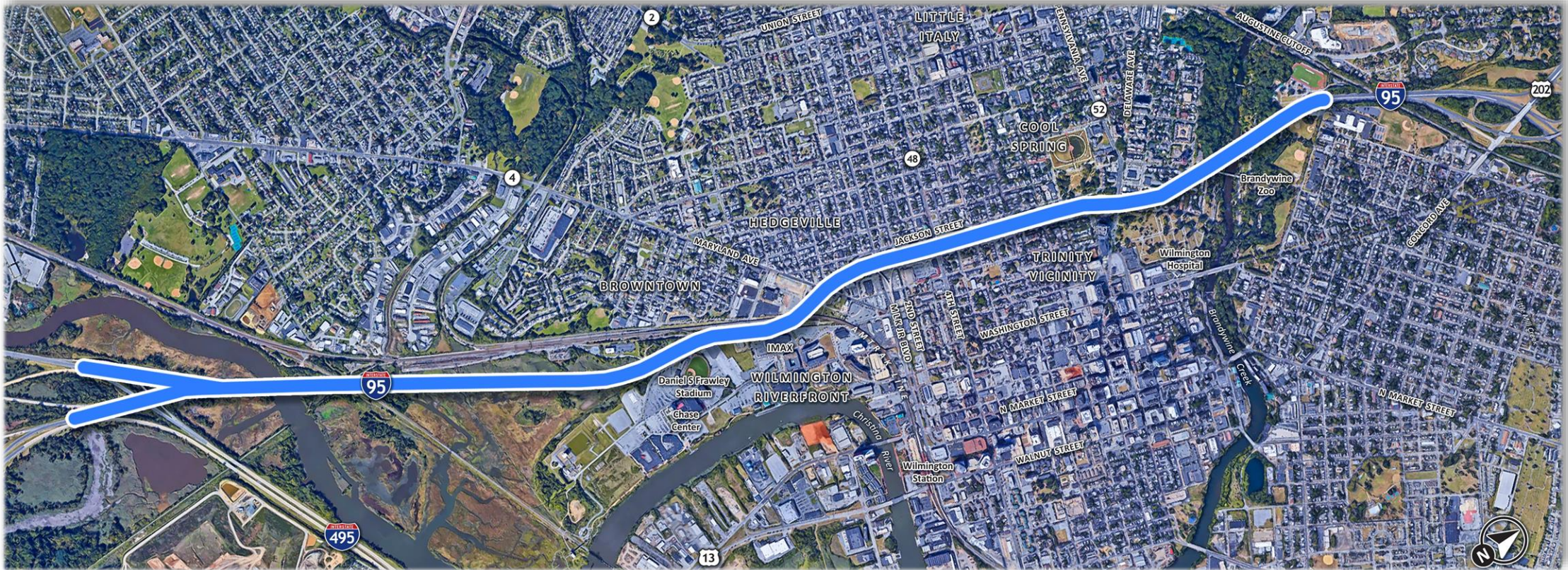
- Project Description
- Project Schedule
- Initial Sequence of I-95 Lane and Ramp Closures
- Incident Management
- Commuting Solutions
- Resources to Stay Informed
- Q&A

I-95 PROJECT DESCRIPTION

- Purpose and Need
 - Maintain and preserve the I-95 Corridor in a state of good repair
 - Ensure a 30 year service life extension to avoid more costly and traffic disrupting repairs
 - Enhance safety along the I-95 Corridor
 - Improve roadway efficiency to lessen traffic congestion

I-95 PROJECT DESCRIPTION

- Extends from I-495 / I-95 split to US 202 (Concord Pike)



I-95 PROJECT DESCRIPTION

- Rehabilitation of 19 bridges and over 3 miles of pavement
- Reconstruction of 11 exit / entrance ramps
- Addition of 4th lane on Brandywine River Bridge Northbound
- Multiple Advance Projects
 - New on-ramp from 2nd Street to I-95 SB



New 2nd Street On-Ramp (looking north)

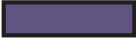


PROJECT SCHEDULE

- Set traffic control measures on I-95
 - Lane closures on I-95 begin on February 12, 2021
- Start actual construction: March 1, 2021
- Reduced lane capacity on I-95 is 2 years
- Total construction time is 3 years





I-95 Lane Configuration Starting in March 2021

- | | |
|---|-----------------------------|
|  | Two travel lanes Southbound |
|  | Two travel lanes Northbound |
|  | Closed for construction |

INITIAL SEQUENCE OF I-95 LANE and RAMP CLOSURES

9



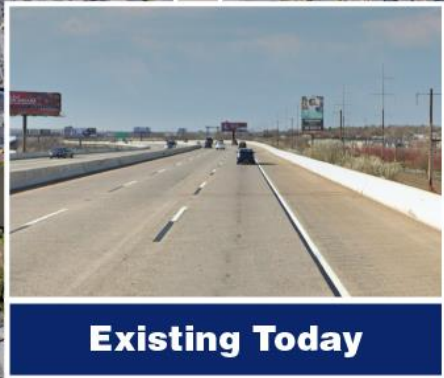
3 Lanes to 2 Lanes



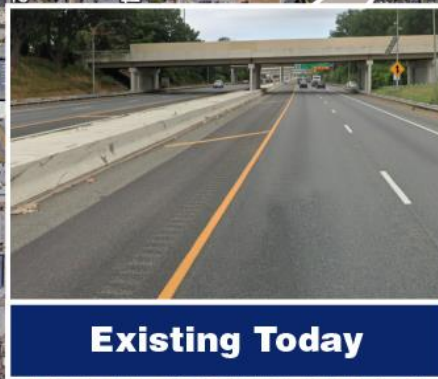
2 Lanes to 1 Lane



3 Lanes to 2 Lanes



Existing Today



Existing Today



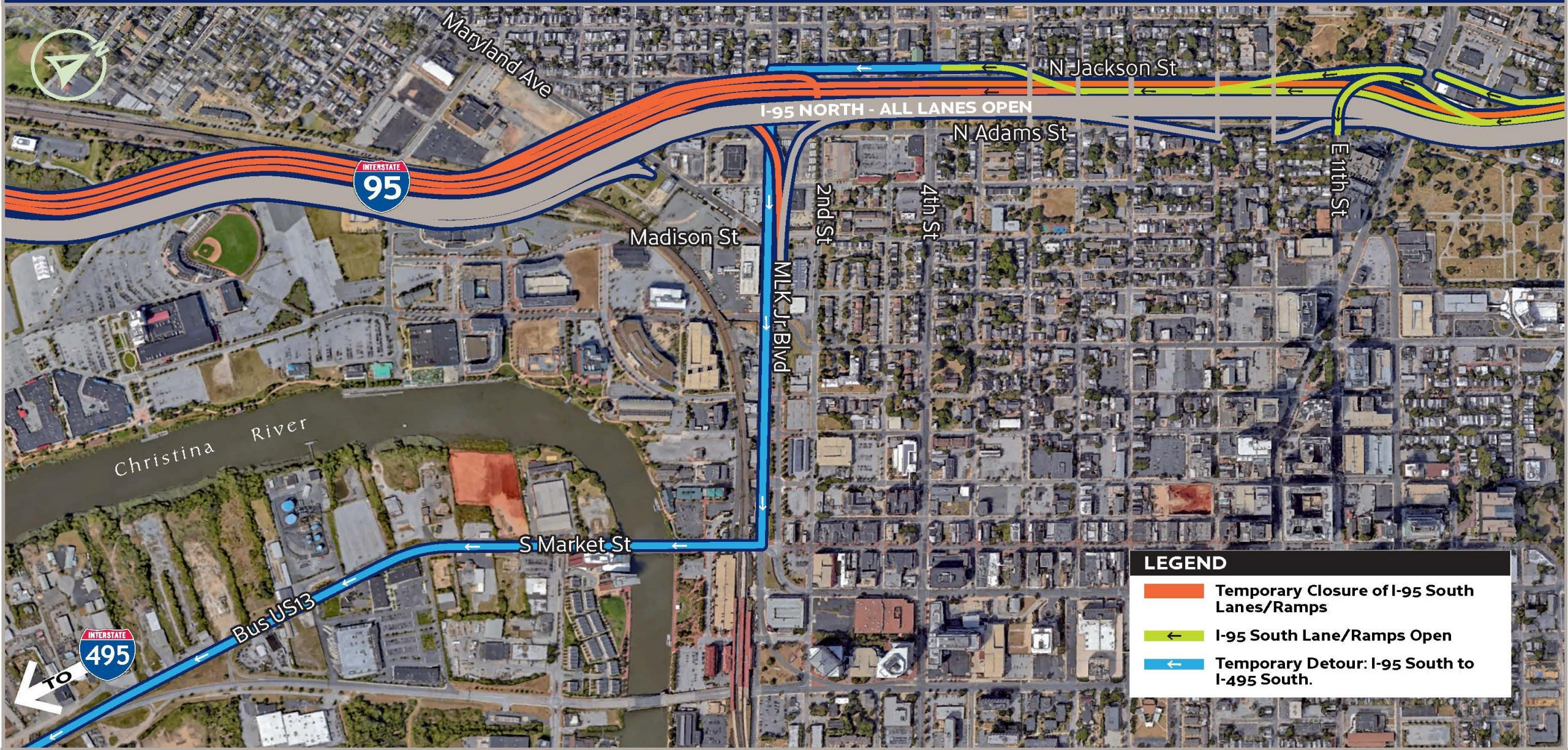
Existing Today

Work Completed over the 2/12 - 2/14 Weekend

- Restriping I-95
- Installing 4 new overhead signs
- Removing/relocating/installing guide signs
- Placing concrete safety barrier

I-95 Lane Configuration on Monday Morning, February 15: I-95 South – Right Lane(s) Open

TEMPORARY NIGHTTIME CLOSURE OF I-95 SOUTH - 2/13 AND 2/14



Detour (2/13 - 10 pm-6:30 am & 2/14 - 10 pm-4 am): Follow Blue Detour Route - Take Exit 6 to N. Jackson Street, left onto Lancaster Avenue to MLK Jr Boulevard and right onto S. Market Street and follow to I-495 South



3 Lanes to 2 Lanes



2 Lanes to 1 Lane



3 Lanes to 2 Lanes

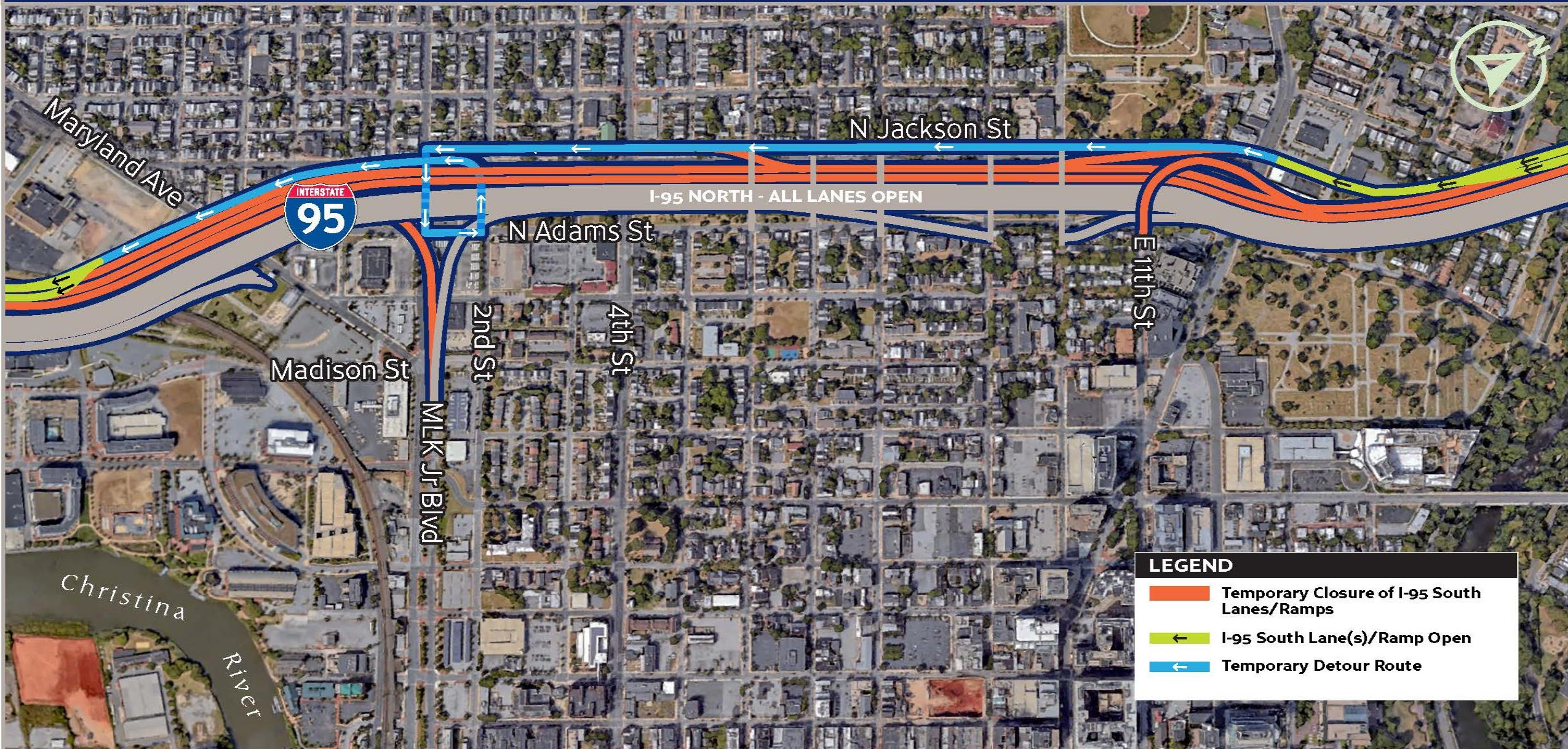


Work Completed by 2/21

- Restriping I-95
- Removing/relocating/installing guide signs
- Placing concrete safety barrier

I-95 Lane Configuration on Sunday Morning, February 21: I-95 South – Right Lane(s) Open

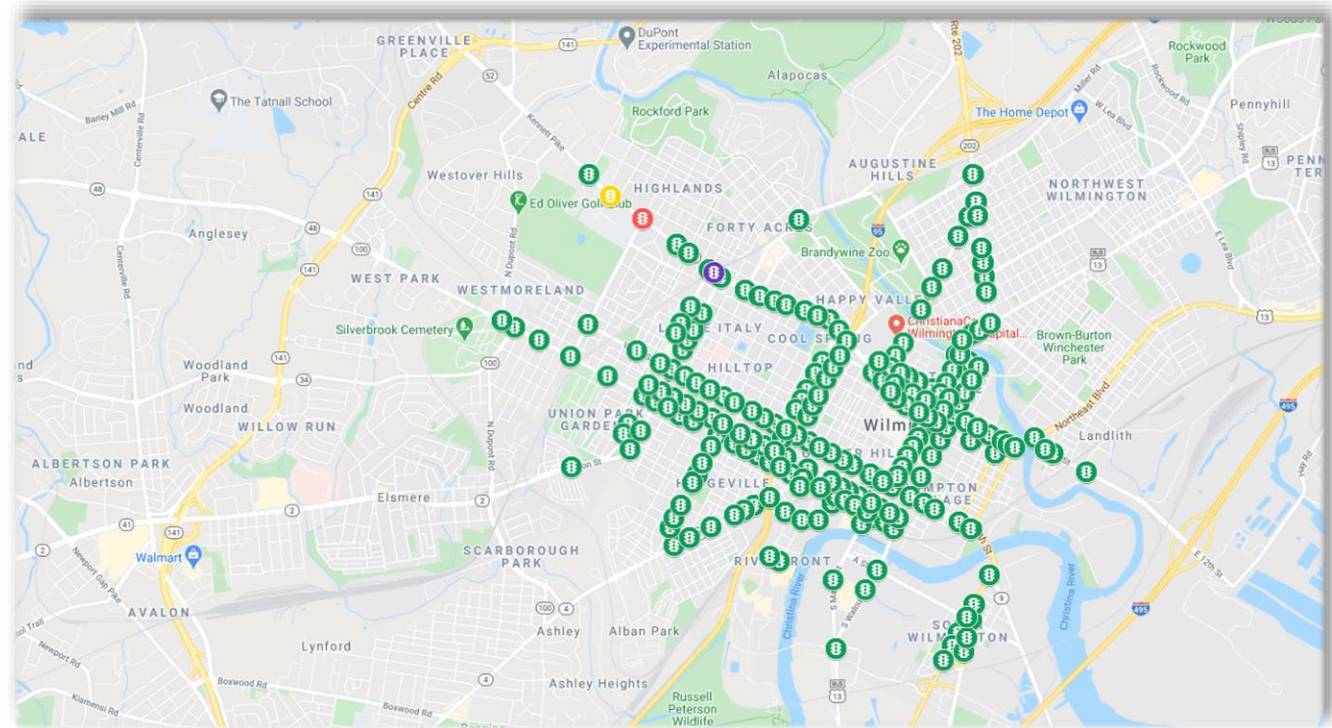
TEMPORARY NIGHTTIME CLOSURE OF I-95 SOUTH - 2/16 AND 2/17



Detour (2/16 & 2/17 - 10 pm-4 am): Follow Blue Detour Route - Take Exit 7B to N. Jackson Street, follow to a left onto Lancaster Avenue, left onto N. Adams Street, and then left onto 2nd Street to access I-95 South

WHAT TO EXPECT

- Traffic Congestion
- Mitigation
 - Signal Timing
 - Alternate Routes
 - Traffic Management System
 - Commuting Solutions
 - Incident Management

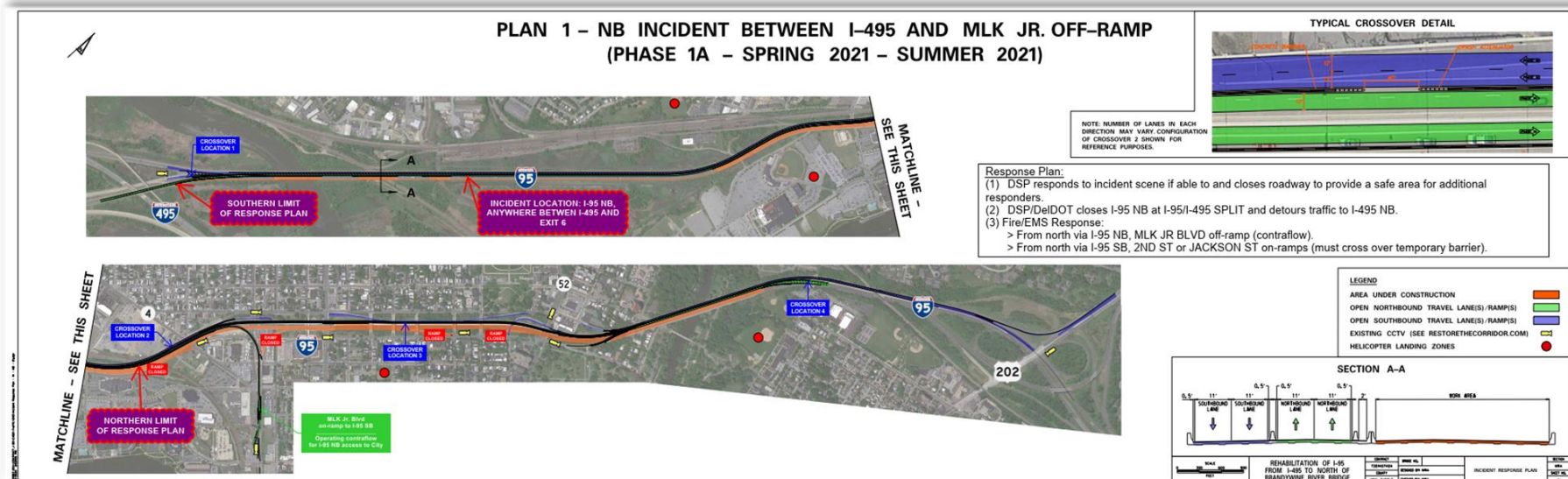


DelDOT can now adjust > 200 City signals to improve traffic flow

WHAT TO EXPECT

- Incident Management “Playbooks”
- Developed to Outline Incident Response
 - Preferred routing
 - Communications, roles, and responsibilities

Sample “Playbook”



WHAT TO EXPECT

- Noise
 - Trucks
 - Construction equipment
 - Hydrodemolition
 - Jackhammers
- Dust/debris
 - Demolition
 - Excavation
- Safety
 - Demolition shields
- Nighttime Work
 - Required to maintain schedule



Hydrodemolition Machine in Action on a Bridge Deck

SR 141 PROJECT UPDATE

- Project Schedule
- Lane Closure Impacts
- Contractor Coordination



- Visit the Project Website for Updates:

<https://deldot.gov/projects/index.shtml?dc=details&projectNumber=T201109001>

COMMUTING SOLUTIONS

18

Statewide Service Change February 14, 2021

New Castle County Highlights:

- Starting in February 2021, DART bus service will be impacted by DelDOT's "Restore the Corridor"
- Re-routing buses away from I-95 to/from Wilmington
 - Route 33 will enter Wilmington via I-495 and US 13
 - Route 40 will travel via US 13, instead of serving Christiana Mall to I-95
 - Routes 54 & 55 will not go to Wilmington from Christiana Mall
- Route Combinations
 - Routes 10 & 34 - NEW Route 10
 - Routes 12 & 25 – NEW Route 25

New Castle County Highlights (cont.):

- Other Changes
 - Route 5 – to/from Wilmington Transit Center via 4th St.
 - Route 11 – reduced rush-hour trips; increased mid-day trips, short-turn at Matson Run
 - Route 14 – Dunleith, DHSS Hospital and Baylor Correctional Inst. served on all trips; service to Cherry Lane, Probation and Parole, Lukens Drive, Riveredge Industrial Park and Steel Drive will be served by Route 28 extension.
 - New Bus lane on portions of northbound US 13 approaching Wilmington

- Rider Tools
 - Download **DART Transit** app or visit DartFirstState.com for:
 - Trip Planning
 - Map of Bus Routes/Stops
 - Real-Time Bus Information
 - Mobile Fare Payment
- Free Wi-Fi on Buses

Follow DART on social media





- Trains serving Delaware's Four Stations
 - Claymont, Wilmington, *Fairplay at Churchmans Crossing*, Newark
 - Service was restored on January 24, 2021 to Fairplay and Newark; adding 9:16 PM train from Wilmington to Philadelphia
- Train will be FASTEST option

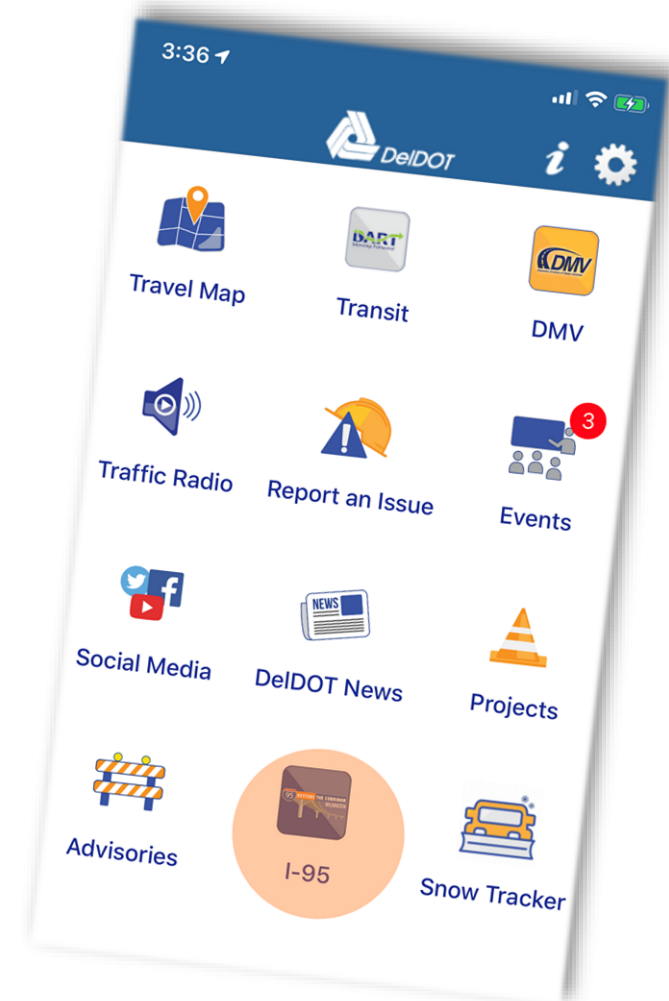
- Direct Employer Resource
- Employee Outreach Services
- Clean Commuting Program
 - Guaranteed Ride Home and Rewards
- Website: www.delawarecommutesolutions.org
- Direct Contact
 - Kathleen Grier – Program Manager
 - 302-576-6141 – kathleen.grier@Delaware.gov

PUBLIC OUTREACH

- Community Advisory Group
- Public Workshops
- Coordination with First Responders
- Construction Liaison: Natalie Barnhart
- DeIDOT App



- Real-Time Traffic Alerts
- Project Website:
www.RestoreTheCorridor.com



RESOURCES TO STAY INFORMED

- Visit the Project Website <http://www.restorethecorridor.com/>
- Sign up for email and text alerts on the project website

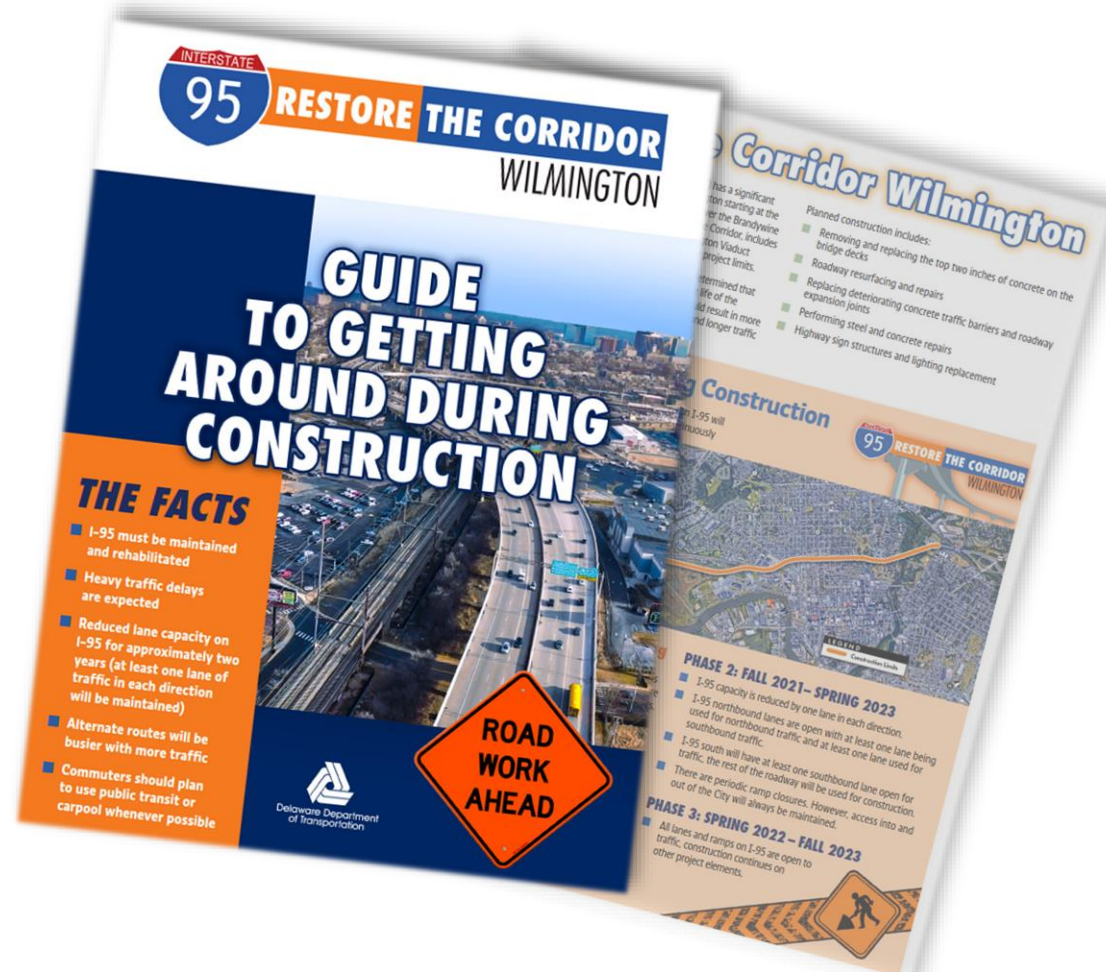


RESOURCES TO STAY INFORMED

- Follow DelDOT social media – Facebook and Twitter
 - <https://www.facebook.com/delawaredot/>
 - <https://twitter.com/DelawareDOT>
 - <https://restorethecorridor.com/stay-informed/public-meetings>

RESOURCES TO STAY INFORMED

- Guide to Getting Around During Construction



QUESTIONS??

28