



REHABILITATION OF I-95 FROM I-495 TO NORTH OF BRANDYWINE RIVER BRIDGE

PUBLIC WORKSHOP (VIRTUAL)

November 12, 2020 – 6 PM to 7:30 PM



Kiewit



INTRODUCTORY REMARKS

2

TONIGHT'S AGENDA

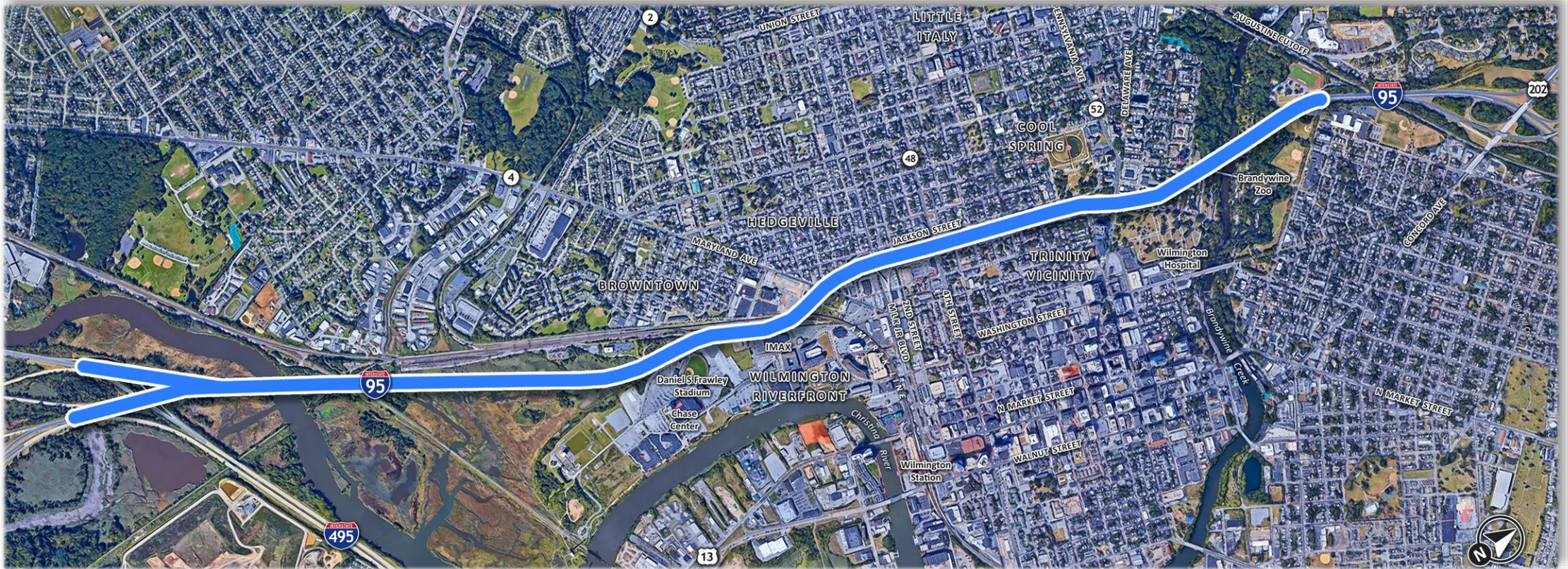
- I-95 Project Description
- CM/GC Process Overview
- Project Schedule
- Construction Phasing
- What to Expect
- Employment Opportunities
- City of Wilmington Improvements
- Commuting Solutions
- Q&A

I-95 PROJECT DESCRIPTION

- Purpose and Need
 - Maintain and preserve the I-95 Corridor in a state of good repair
 - Ensure a 30 year service life extension to avoid more costly and traffic disrupting repairs
 - Enhance safety along the I-95 Corridor
 - Improve roadway efficiency to lessen traffic congestion

I-95 PROJECT DESCRIPTION

- Extends from I-495 / I-95 split to US 202 (Concord Pike)



I-95 PROJECT DESCRIPTION

- Extends from I-495 / I-95 split to US 202 (Concord Pike)
- Rehabilitation of 19 bridges and over 3 miles of pavement
- Reconstruction of 11 exit / entrance ramps
 - New on-ramp from 2nd Street to I-95 SB
- Addition of 4th lane on Brandywine River Bridge Northbound
- Multiple Advance Projects

ADVANCE PROJECTS

- Breakout Contracts
 - New 2nd Street On-Ramp to I-95
 - Bridge bearings
 - Temporary basketball courts at Jackson St.
 - New overhead sign structures



New 2nd Street Ramp Bridge over Lancaster Avenue



Construction of Temporary Basketball Courts

ADVANCE PROJECTS

- Early Work Packages – Summer/Fall 2020
 - Demolition shields over Amtrak and City Streets
 - I-95 SB shoulder work and median crossovers
 - Material procurement



Demo Shields

I-95 Shoulder
and Median Work

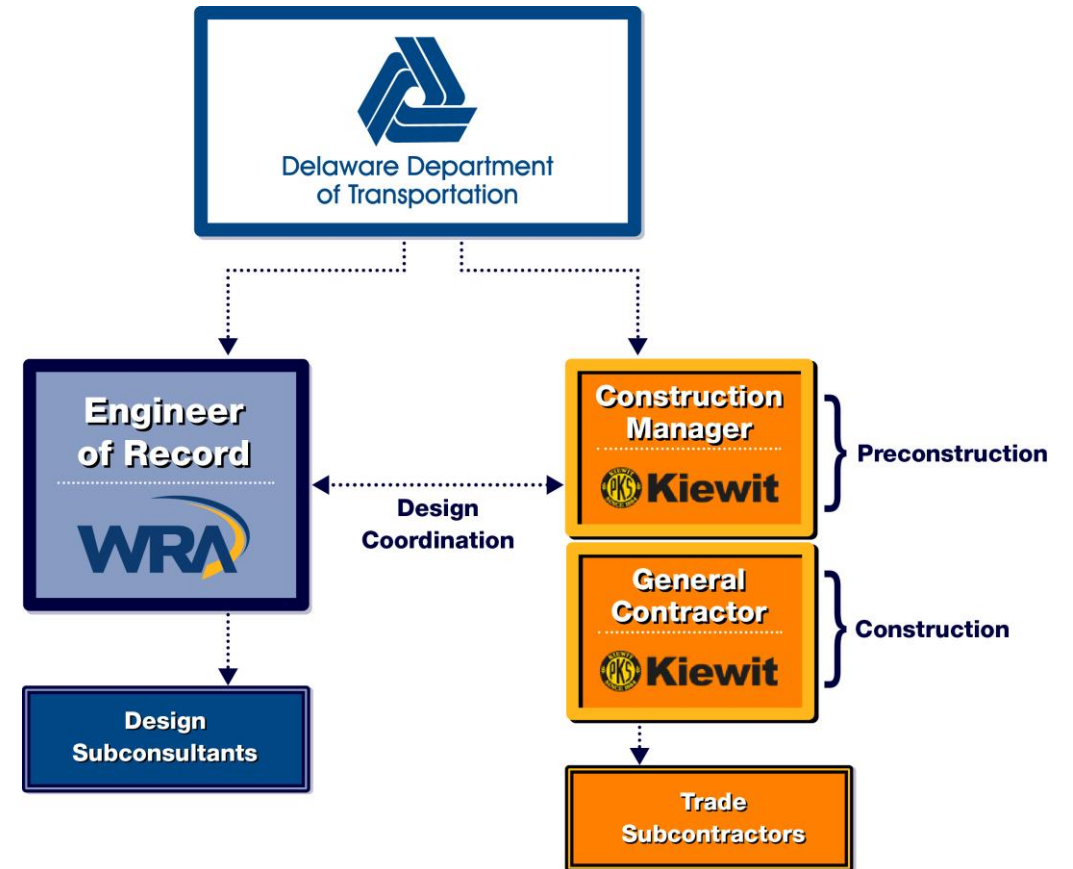


CONSTRUCTION MANAGER/ GENERAL CONTRACTOR (CM/GC) PROCESS OVERVIEW

9

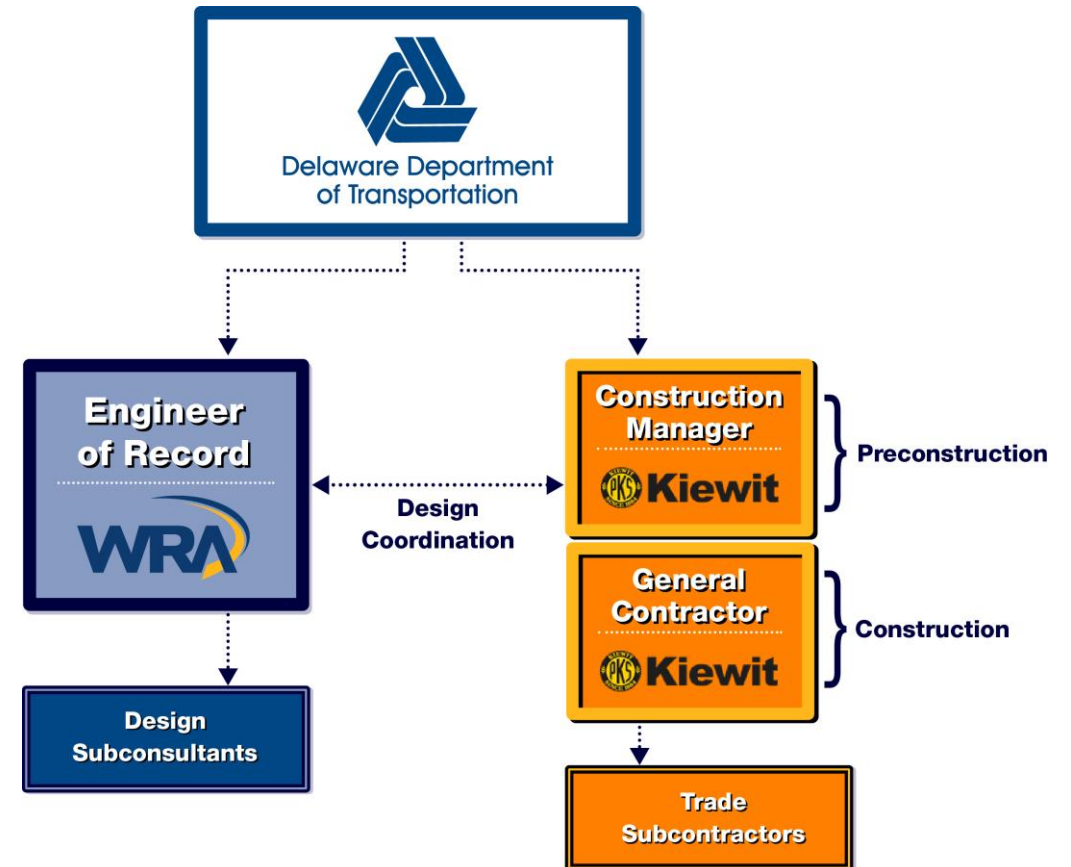
CM/GC PROCESS OVERVIEW

- Two (2) Phase Process
 - Preconstruction
 - Construction



CM/GC PROCESS OVERVIEW

- CM/GC Process Benefits
 - Lowers and mitigates risk
 - Fosters innovation
 - Improves quality
 - Controls cost
 - Optimizes schedule
 - Early Work Packages can facilitate completion of work faster



PROJECT SCHEDULE

12

PROJECT SCHEDULE

- Six (6) advance contracts: Ongoing
 - Material procurement
- Set traffic controls on I-95 (lane closure): February 12, 2021
(Estimated)
- Start actual construction: March 1, 2021
- Reduced lane capacity on I-95 = 2 years or less
 - Total construction time is 3 years or less

CONSTRUCTION PHASING

14

CONSTRUCTION PHASING

- Goals
 - Provide safe work zone
 - Minimize lane reductions and lane closures on I-95
 - Maintain ingress and egress to the City at ALL times
 - Implement signed detours in the City
 - Ensure efficient completion of the work

CONSTRUCTION PHASING SUMMARY

- Phases 1A / 1B
 - Reduce I-95 capacity by one (1) lane in each direction
 - NB and SB traffic share I-95 SB (i.e., “contraflow”)
 - I-95 NB roadway closed
 - Maintain egress/ingress to City via ramps
- Phases 2A / 2B / 2C
 - Similar concepts to Phases 1A / 1B
 - Maintain egress/ingress to City via ramps
- Phase 3
 - All lanes on I-95 and all ramps will be open

Phase 1A - Feb 2021 - Summer 2021 (S. Wilmington Section)



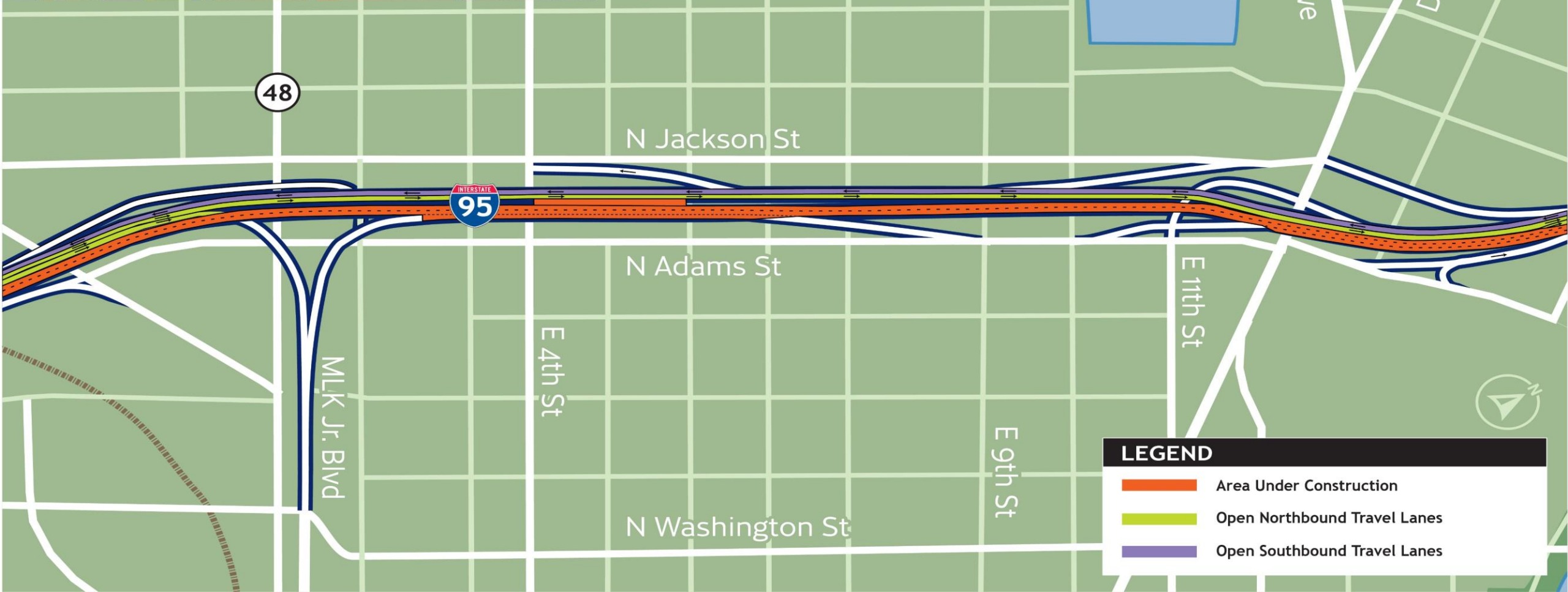
Phase 1A - Feb 2021 - Summer 2021 (Viaduct Section)



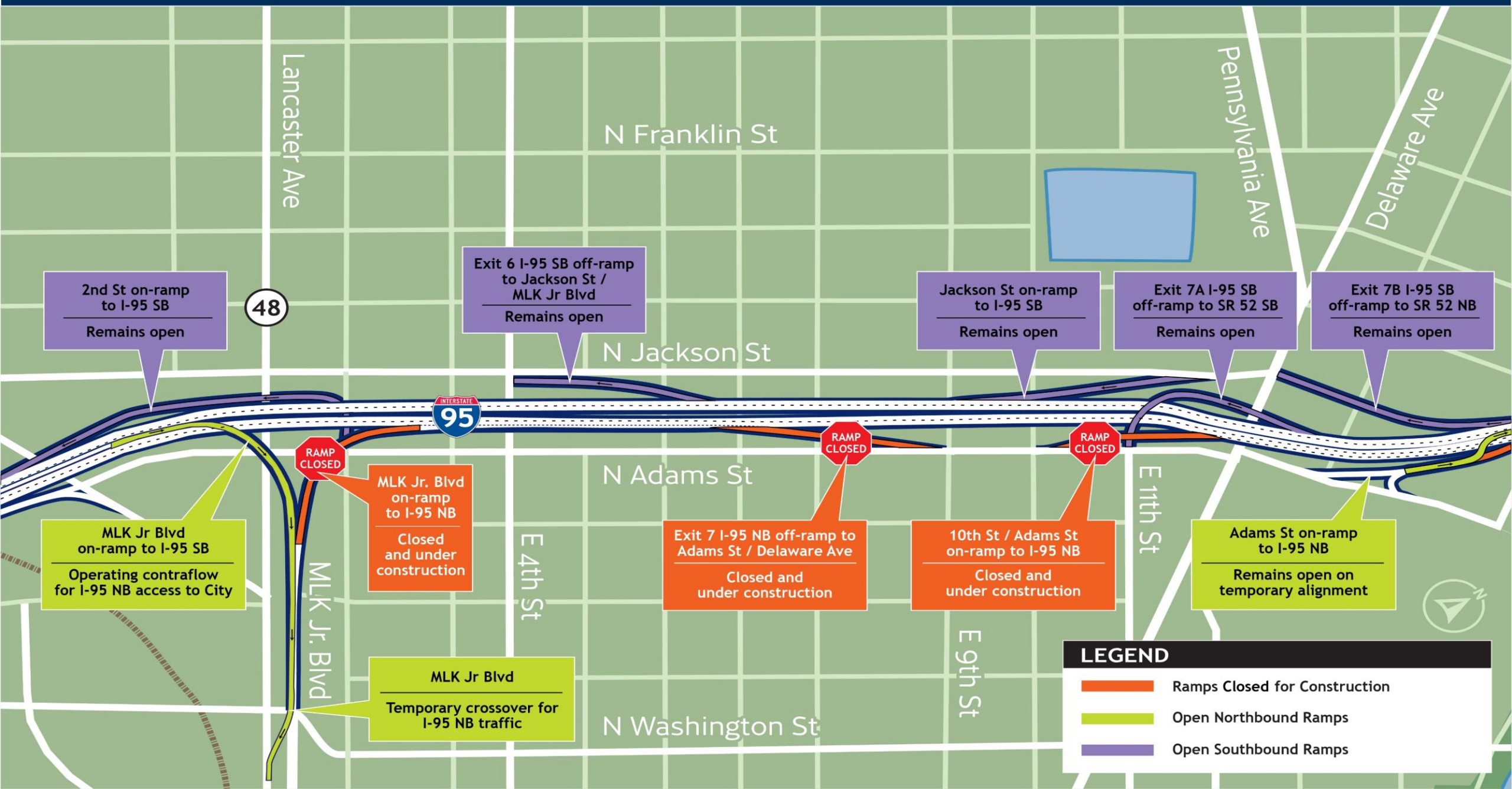
LEGEND

- Area Under Construction
- Open Northbound Travel Lane(s)/Ramp(s)
- Open Southbound Travel Lane(s)/Ramp(s)

Phase 1A - Feb 2021 - Summer 2021 (Downtown Section)

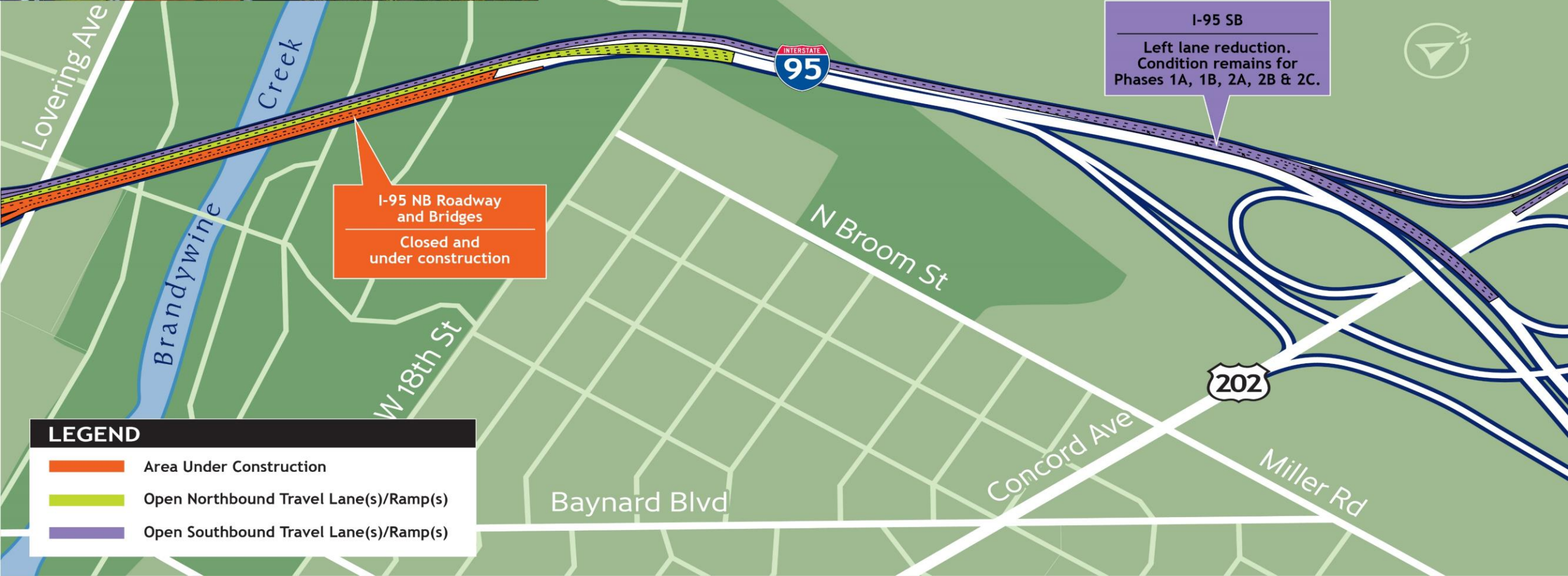


Phase 1A - Feb 2021 - Summer 2021 (Downtown Section Ramps)



Phase 1A - Feb 2021 - Summer 2021 (Brandywine Br. Section)

- Two travel lanes Southbound
- Two travel lanes Northbound
- Closed for construction



LEGEND

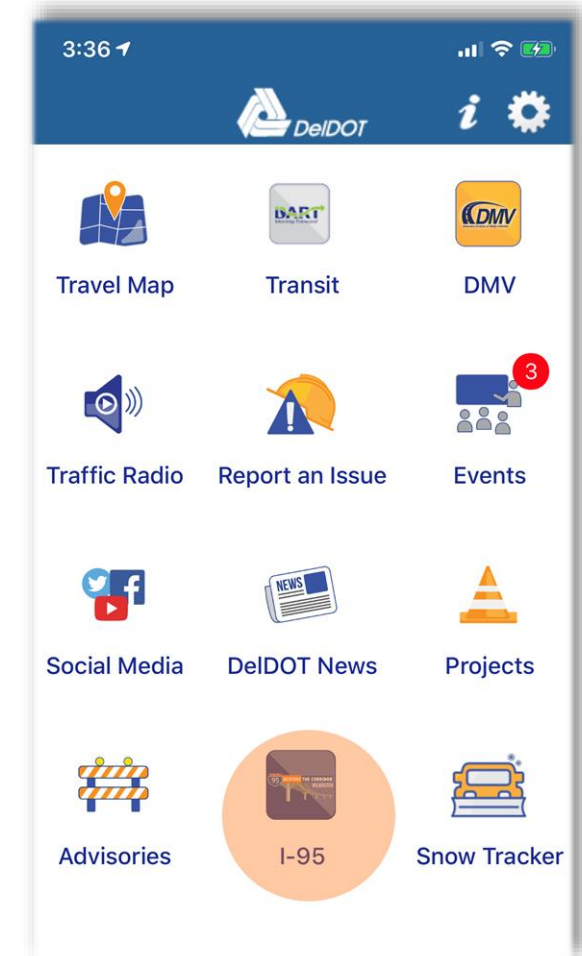
- Area Under Construction
- Open Northbound Travel Lane(s)/Ramp(s)
- Open Southbound Travel Lane(s)/Ramp(s)

WHAT TO EXPECT

22

WHAT TO EXPECT

- Public Workshops
- Project Website:
www.RestoreTheCorridor.com
- DeIDOT App: 
- Commuting solutions
- EMS meetings
- Local route improvements
- City signal timing improvements

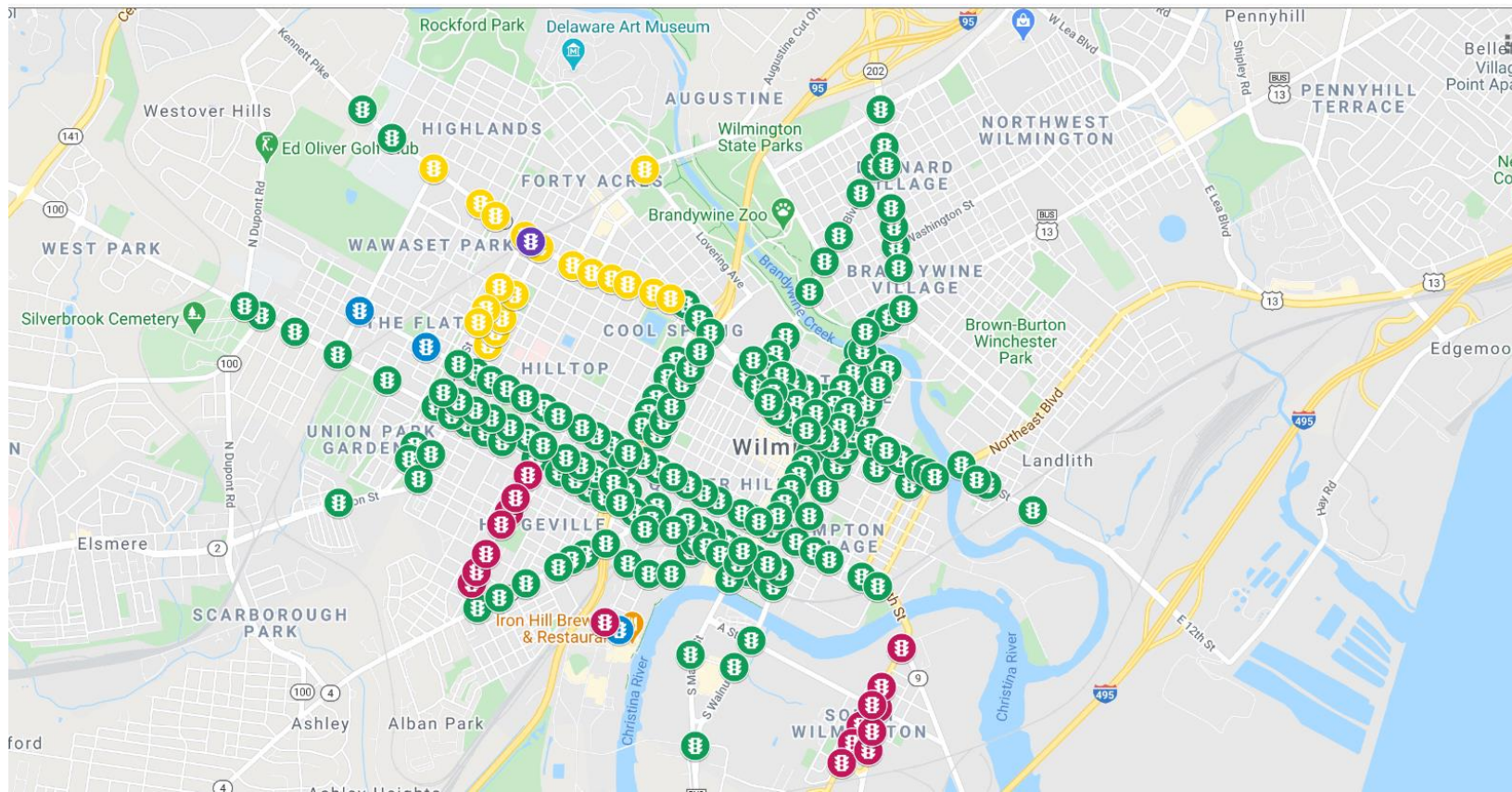


WHAT TO EXPECT

- Traffic Congestion
 - Delays/impacts depend on:
 - Time of day
 - Weather
 - Traffic volumes
 - Incidents
 - Trip origin/destination
 - Diversion rate
 - Construction phase

SIGNAL TIMING IMPROVEMENTS

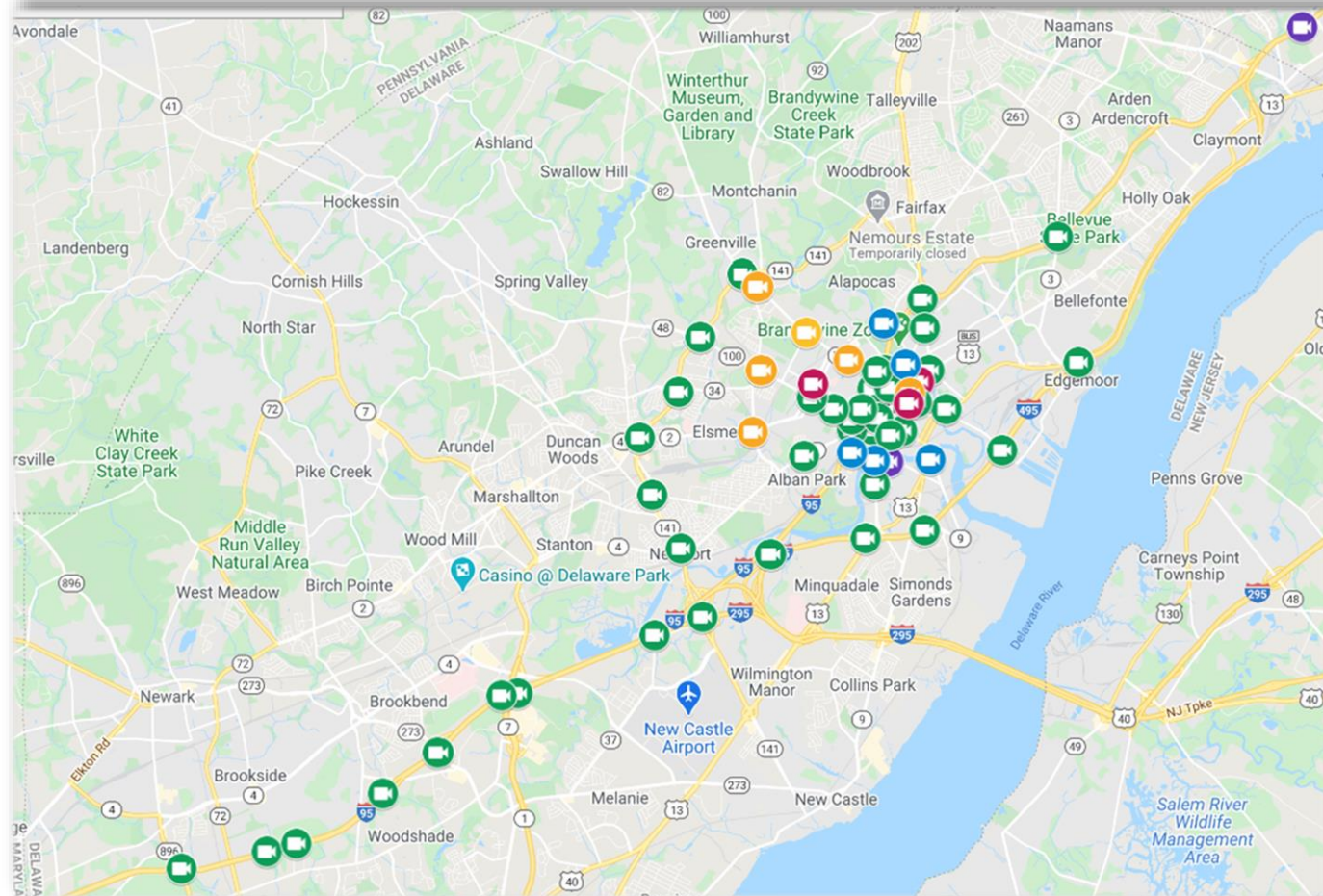
- Over 200 City signals are being managed by DelDOT



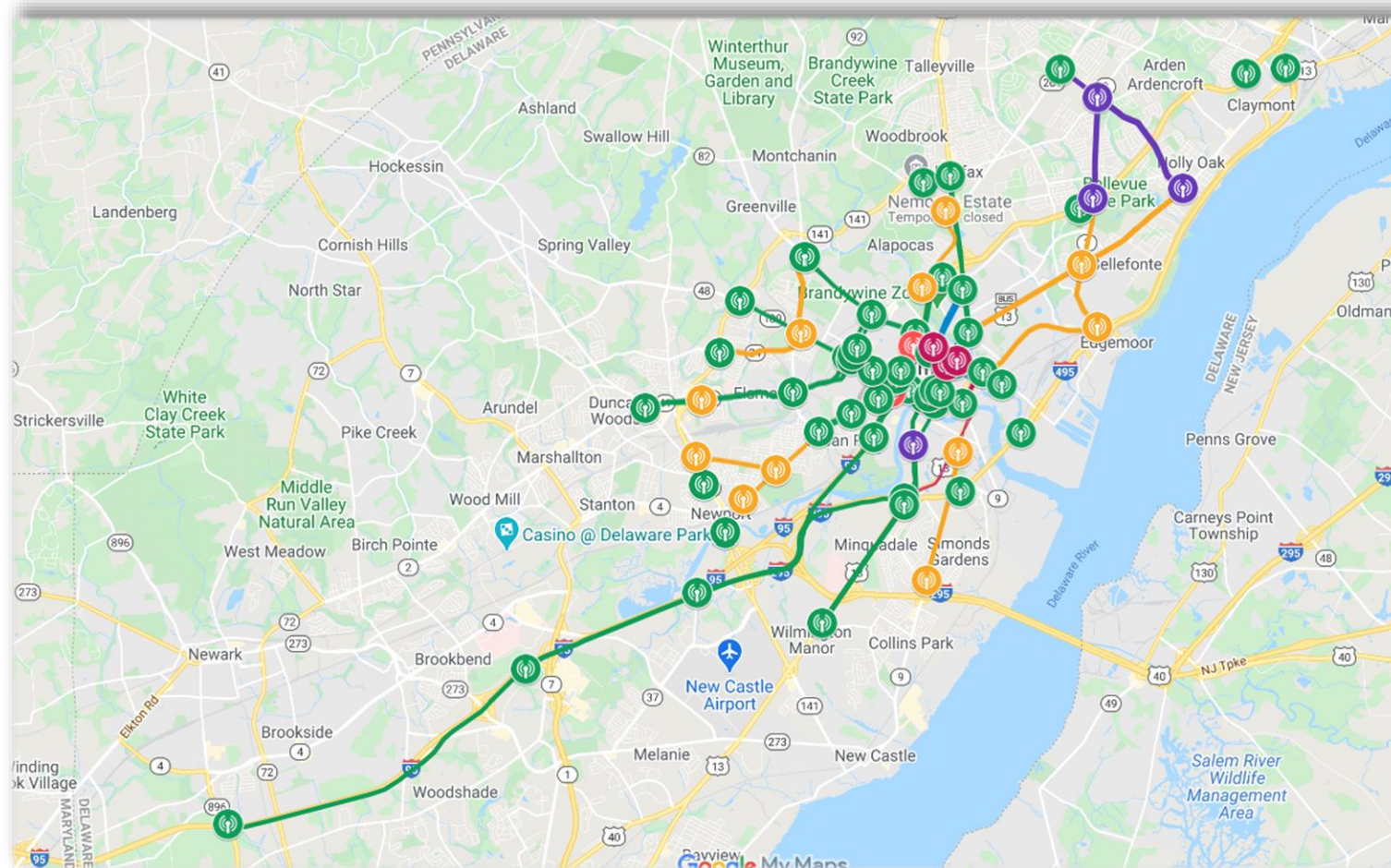
TRAFFIC MONITORING AND IMPROVEMENTS

- Installation of Traffic Monitoring Devices throughout City
 - Traffic cameras
 - Bluetooth Travel Times
 - System Detection
 - Variable Message Signs
- Active Traffic Management System

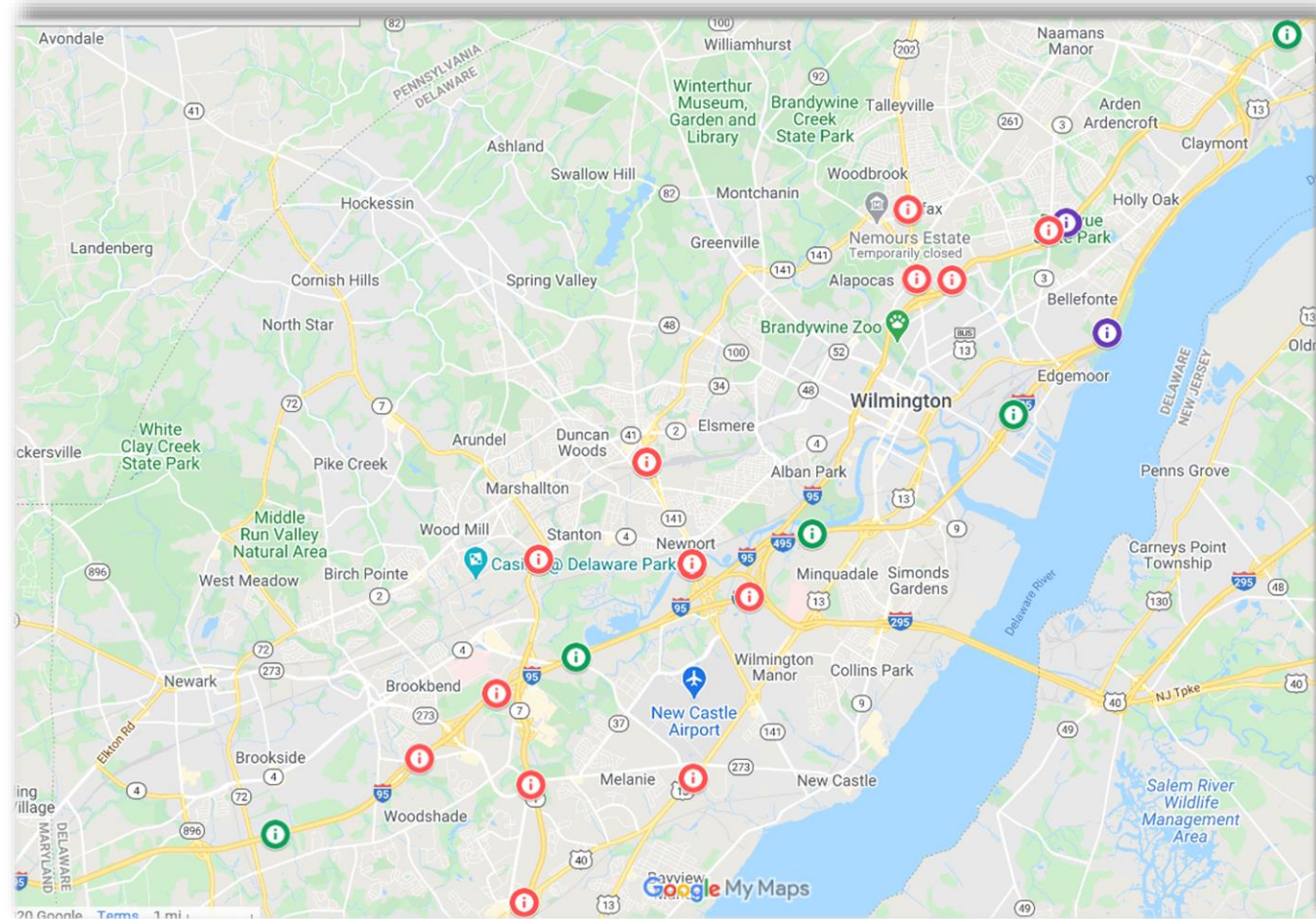
TRAFFIC CAMERAS



BLUETOOTH TRAVEL TIMES



VARIABLE MESSAGE SIGNS



EMS COORDINATION / PROGRESS

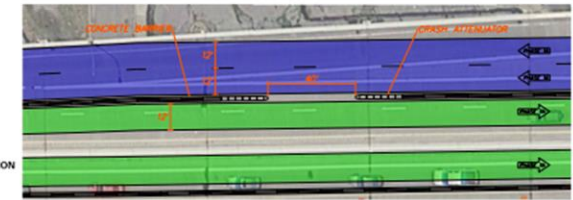
- Ongoing Emergency Responders Meetings
 - Construction Phasing update
 - Small breakout meetings with individual groups
 - Performing table top exercises for various scenarios
- Developing “Playbooks” – Incident Response by Phase of Construction
 - Preferred routing
 - Communications
 - Roles and responsibilities

EMS COORDINATION / PROGRESS

PLAN 1 - NB INCIDENT BETWEEN I-495 AND MLK JR. OFF-RAMP
(PHASE 1A - SPRING 2021 - SUMMER 2021)



TYPICAL CROSSOVER DETAIL



NOTE: NUMBER OF LANES IN EACH DIRECTION MAY VARY. CONFIGURATION OF CROSSOVER 2 SHOWN FOR REFERENCE PURPOSES.

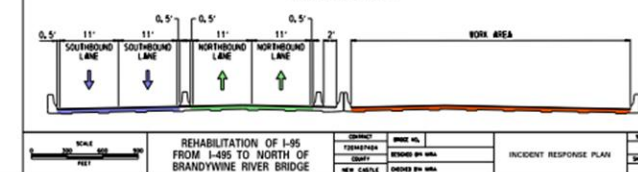
Response Plan:

- (1) DSP responds to incident scene if able to and closes roadway to provide a safe area for additional responders.
- (2) DSP/DelDOT closes I-95 NB at I-95/I-495 SPLIT and detours traffic to I-495 NB.
- (3) Fire/EMS Response:
 - > From north via I-95 NB, MLK JR BLVD off-ramp (contraflow).
 - > From north via I-95 SB, 2ND ST or JACKSON ST on-ramps (must cross over temporary barrier).

LEGEND

- AREA UNDER CONSTRUCTION
- OPEN NORTHBOUND TRAVEL LANE(S)/RAMP(S)
- OPEN SOUTHBOUND TRAVEL LANE(S)/RAMP(S)
- EXISTING CCTV (SEE RESTORETHECORRIDOR.COM)
- HELICOPTER LANDING ZONES

SECTION A-A



WHAT TO EXPECT DURING CONSTRUCTION

- Noise
 - Trucks
 - Construction equipment
 - Hydrodemolition
 - Jackhammers
- Dust/debris
 - Demolition
 - Excavation
- Safety
 - Demolition shields
- Nighttime Work
 - Required to maintain schedule



Hydrodemolition Machine in Action on a Bridge Deck

EMPLOYMENT OPPORTUNITIES HIRING LOCAL CRAFT AND STAFF

- Traffic Control
- Hourly Trucking
- Aggregate Trucking/Supply
- Flatwork
- Guardrail
- Misc. Drainage Supply
- SIP Decking Install
- Rebar Installation
- Bridge Welding
- Erosion Sediment Control
- Landscaping
- Misc. Metal Fabrication
- Onsite Fueling
- Construction Supplies

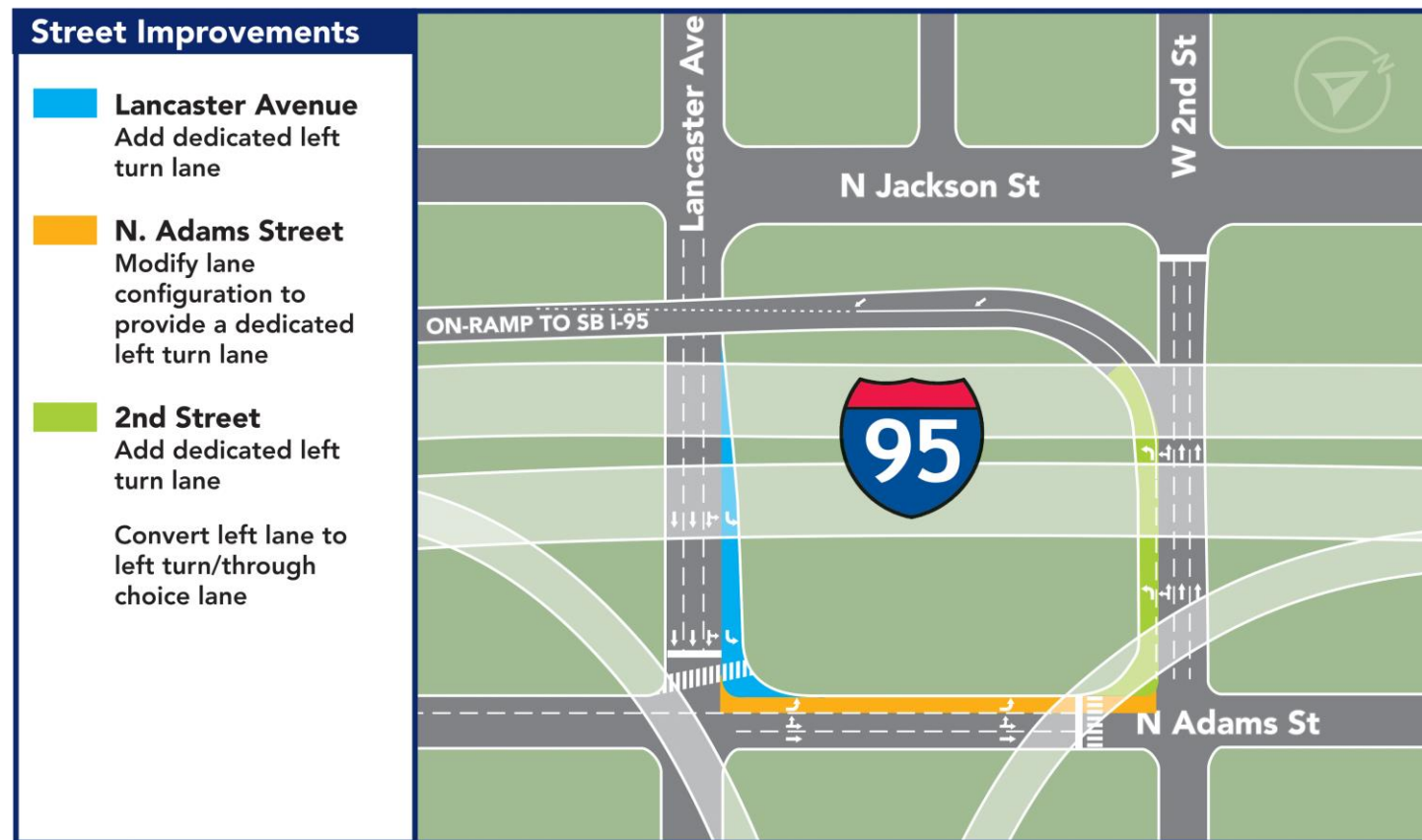


CITY OF WILMINGTON IMPROVEMENTS

34

CITY OF WILMINGTON IMPROVEMENTS

- Improvements to local City streets



CITY OF WILMINGTON IMPROVEMENTS

- Water main replacement



CITY OF WILMINGTON IMPROVEMENTS

- 6th Street Overpass Beautification (West Side Grows)



COMMUTING SOLUTIONS

38

Commuting Options





- Community Conversations Held in Sept./Oct.
- Virtual Public Hearing Workshop via Zoom
 - Wednesday, November 18, 4-6 PM
 - Zoom link, proposals, maps, comment forms are available on www.DartFirstState.com

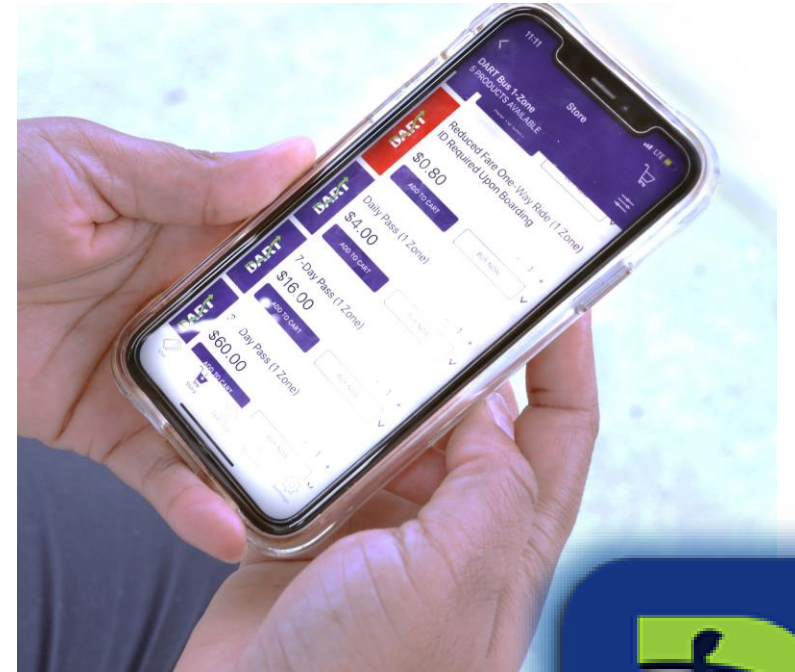
Convenience at your Fingertips with DART Transit App



- Trip Planning
- Map of Bus Routes/Stops
- Real-Time Bus Information
- Mobile Fare Payment

Mobile Fare Payment with DART Pass App!

- Contactless Fare Payment
- Cash-Free Transaction
- Promotional Pass Discounts



Stay Connected with DART

- Follow us on social media



- For questions, visit DartFirstState.com or contact DART's Information Center at 1-800-652-3278 (DART)



- Trains serving Delaware's Four Stations
 - Claymont
 - Wilmington
 - *Fairplay at Churchmans Crossing*
 - *Newark*
- Train will be FASTEST option

For questions, contact SEPTA at 1-215-580-7800

or visit www.septa.org

RideShare Delaware Resources

- Website: www.ridesharedelaware.org
- RideShare DE app The icon shows a white car inside a blue circle with a green arc above it, all on a blue square background.
- Incentive Programs
- Follow us on social media Four social media icons are displayed in a row: Facebook (blue 'f'), Instagram (colorful camera icon), Twitter (blue bird), and LinkedIn (blue 'in' logo).



- Carpool Matching
- Vanpool Formation

Trip Type

New or saved?

Mode:

- ☐ Carpool or vanpool
- ☐ Transit
- ☐ Walk
- ☐ Bike
- ☐ Scooter
- ☐ Multi (e.g., walk + transit)
- ☒ Telecommute
- ☐ Brown bag lunch
- ☐ Compressed week

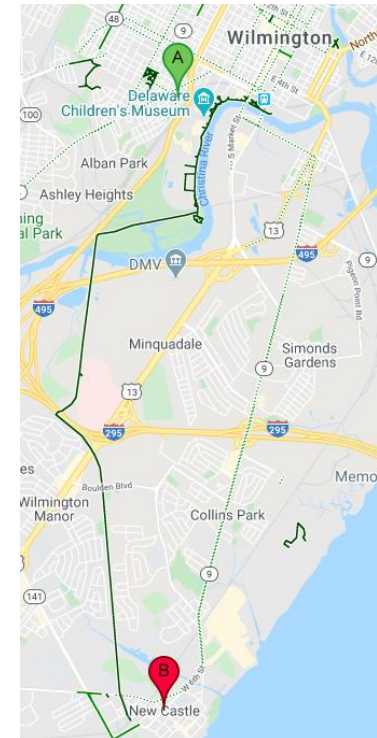
Find Rides:

RideShare Delaware Dover, DE, USA

Matches	Vanpools
24 carpoolers	Commute with Enterprise 3.6 mi Seats available
18 vanpools	Commute with Enterprise 5.4 mi Seats may be available
3 transit routes	Commute with Enterprise 6.2 mi Seats may be available
1 bike route	Commute with Enterprise 7.0 mi Seats may be available
1 walk route	Commute with Enterprise 7.1 mi Seats may be available



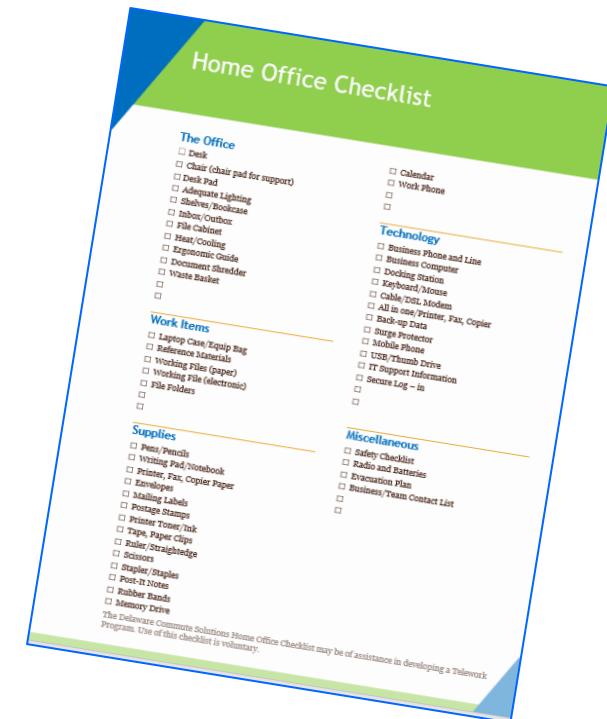
- Walking Routes
- Bike Paths



Bike Path Route



- Telework Toolkit
 - Employee Training
 - Automated Tools
 - Home Office Checklist
 - Telework Technology Checklist
 - Home Office Safety Checklist



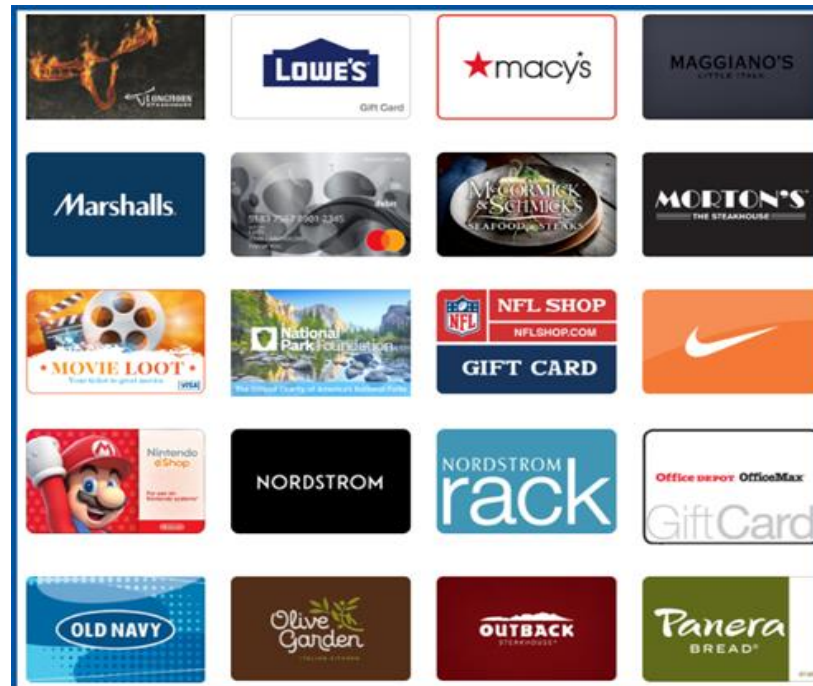
Incentive Programs



Rewards Program

Three Easy Steps!

- Clean Commute
- Record
- Redeem Rewards
 - Over 500 local rewards
 - Monthly Drawing



Monthly Drawing!

Drawing for \$50 Gift Card

Win a \$50 gift card



Enter for a chance to win one of two \$50 gift cards! Gift cards will be fulfilled electronically by Tango, and winners will be able to choose from over 100 national brands!

The monthly drawing varies in values per month (\$25, \$50, or \$100)

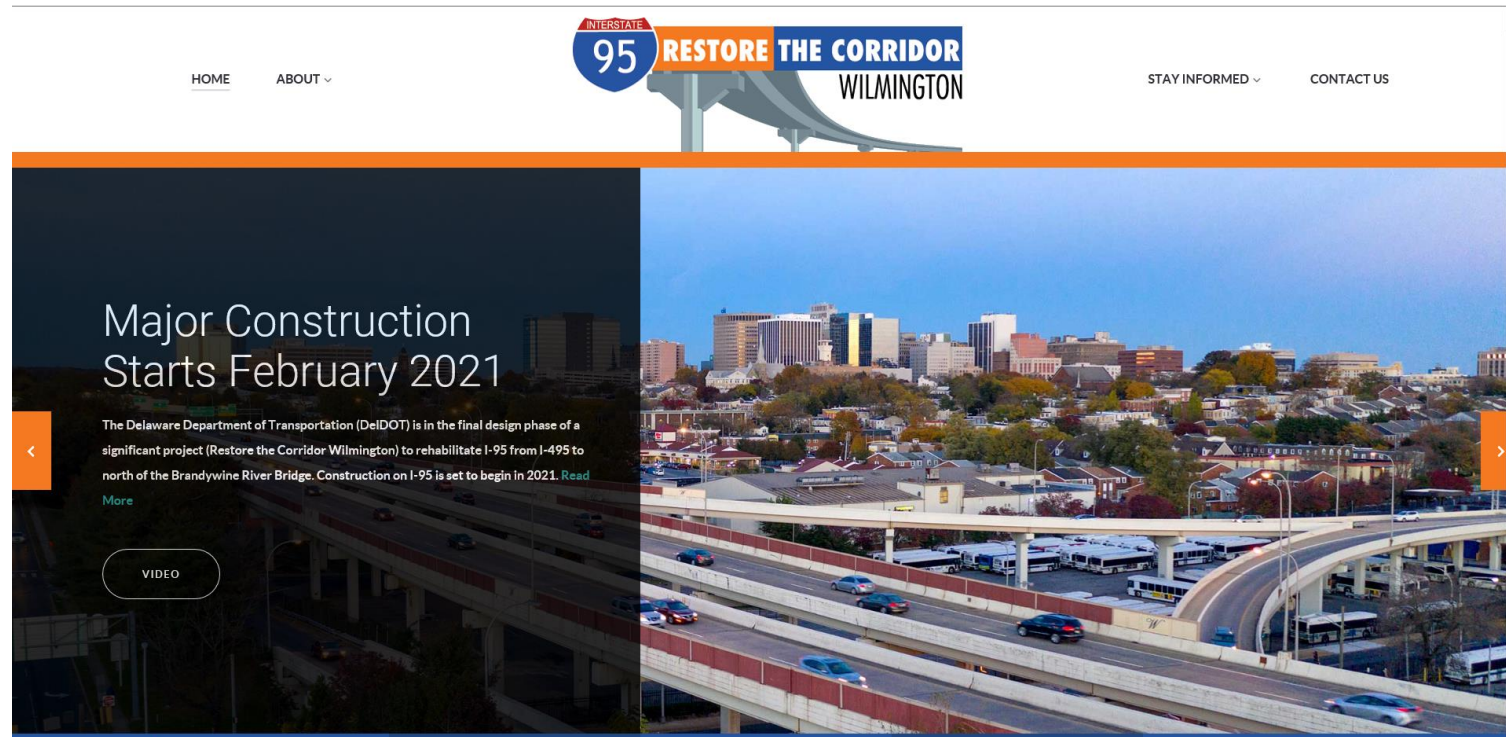
Guaranteed Ride Home No Worries, We Got This

- Reimbursement of an alternate mode of transportation if an unexpected event occurs
- All active program members can utilize benefit
- Use this benefit up to FIVE times a year



GET UPDATES AND STAY INFORMED

- Go to the project website – www.RestoreTheCorridor.com
- Sign up for email and text alerts on the project website



GET UPDATES

- Follow DelDOT social media – Facebook and Twitter
 - <https://www.facebook.com/delawaredot/>
 - <https://twitter.com/DelawareDOT>
- Survey Questions

QUESTIONS??

54