



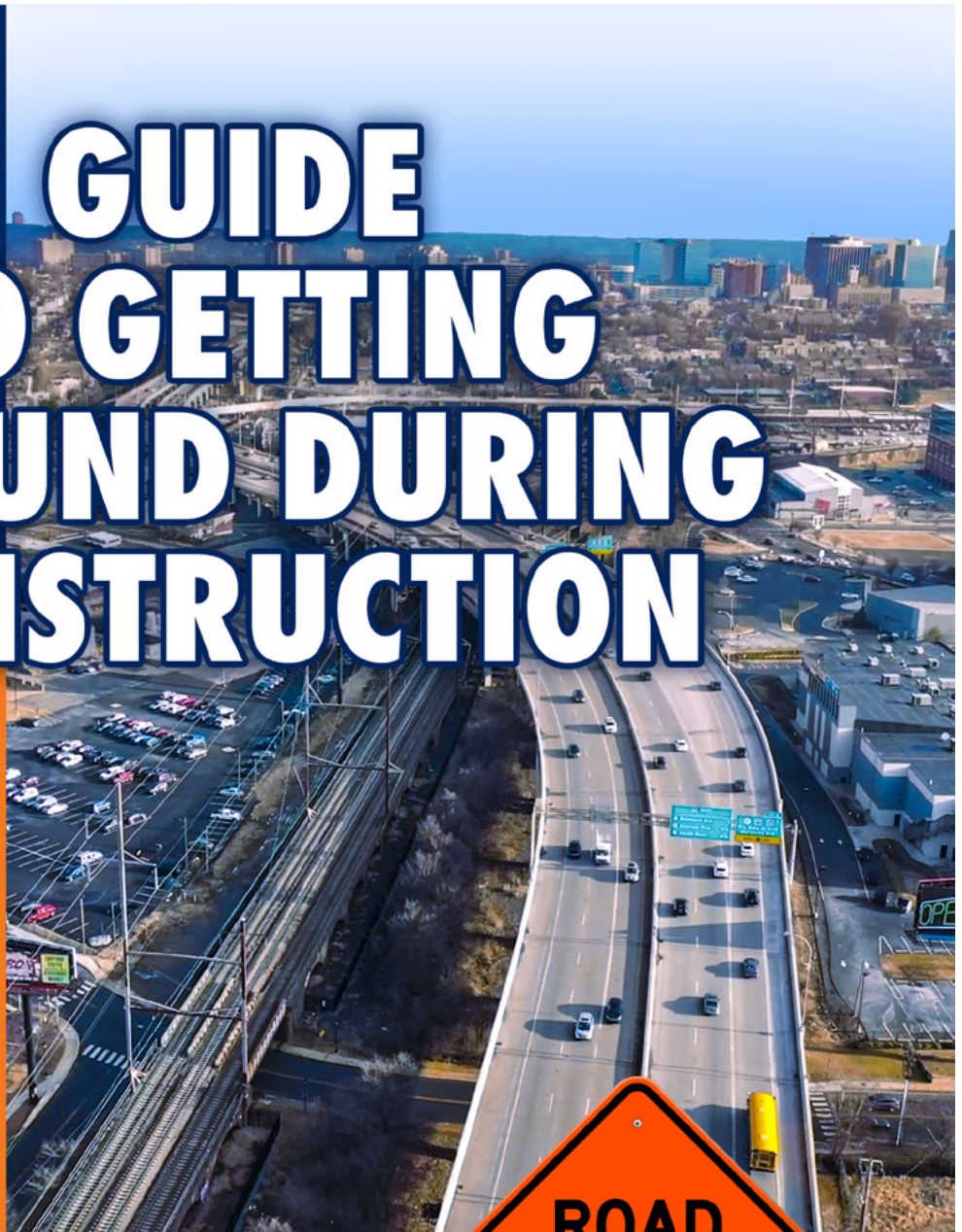
RESTORE THE CORRIDOR

WILMINGTON

GUIDE TO GETTING AROUND DURING CONSTRUCTION

THE FACTS

- I-95 must be maintained and rehabilitated
- Heavy traffic delays are expected
- Reduced lane capacity on I-95 for approximately two years (at least one lane of traffic in each direction will be maintained)
- Alternate routes will be busier with more traffic
- Commuters should plan to use public transit or carpool whenever possible



**ROAD
WORK
AHEAD**



Delaware Department
of Transportation

Restore the Corridor Wilmington

The Delaware Department of Transportation (DelDOT) has a significant project underway to rehabilitate I-95 through Wilmington starting at the I-495/I-95 split and ending north of the I-95 bridge over the Brandywine River (just north of downtown). The project, Restore the Corridor, includes the repair of 19 bridges including the mile-long Wilmington Viaduct (elevated section), I-95 pavement, and ramps within the project limits.

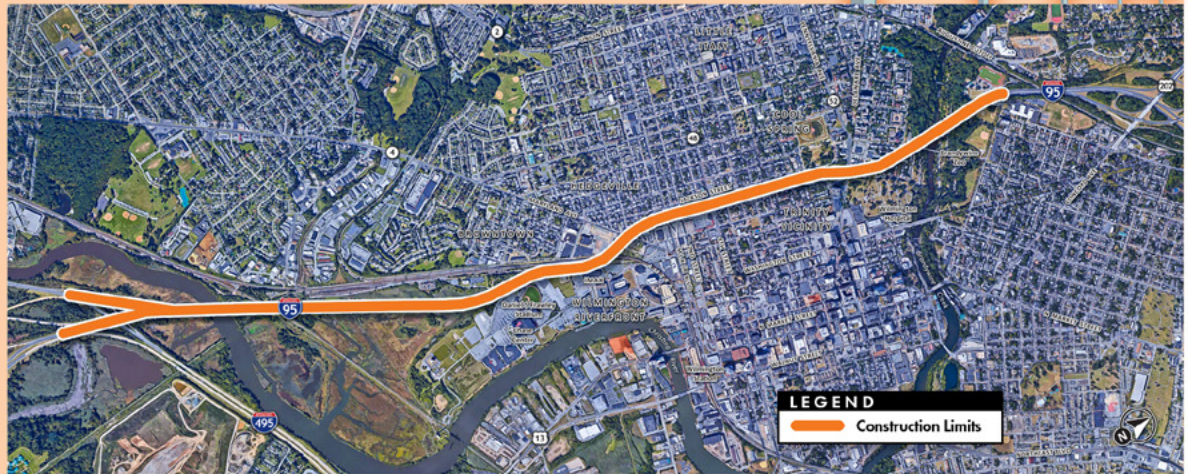
After completing detailed engineering studies, DelDOT determined that performing targeted repairs now could extend the service life of the bridges by a minimum of 30 years. Delaying this work would result in more costly and extensive repairs, in turn creating more severe and longer traffic impacts and delays.

Planned construction includes:

- Removing and replacing the top two inches of concrete on the bridge decks
- Roadway resurfacing and repairs
- Replacing deteriorating concrete traffic barriers and roadway expansion joints
- Performing steel and concrete repairs
- Highway sign structures and lighting replacement

What to Expect During Construction

During construction, at least one lane in each direction on I-95 will remain open and ramp closures will be staggered to continuously maintain access in and out of Wilmington. Heavy traffic delays are expected. Motorists are encouraged to use I-495 which will have signs directing motorists into Wilmington. Major traffic impacts are expected for approximately two years of the three year construction project.



Construction Traffic Pattern Phasing

There are three major phases of construction planned. The estimated durations and key details regarding the traffic patterns for each phase are listed below. Please note that the durations are subject to change due to weather and other unanticipated events.

Please see inside for detailed maps for Phase 1.

There is the potential for weekend or nighttime full closures of I-95 northbound or southbound to switch between major construction stages.

PHASE 1: FEBRUARY 2021– FALL 2021

- I-95 capacity is reduced by one lane in each direction.
- I-95 northbound lanes are closed. Northbound and southbound traffic will now share the southbound lanes.
- There are periodic ramp closures. However, access into and out of the City will always be maintained.

PHASE 2: FALL 2021– FEBRUARY 2023

- I-95 capacity is reduced by one lane in each direction.
- I-95 northbound lanes are open with at least one lane being used for northbound traffic and at least one lane used for southbound traffic.
- I-95 south will have at least one southbound lane open for traffic, the rest of the roadway will be used for construction.
- There are periodic ramp closures. However, access into and out of the City will always be maintained.

PHASE 3: FEBRUARY 2023 – FALL 2023

- All lanes and ramps on I-95 are open to traffic, construction continues on other project elements.



Real-Time Traveler Information

An active traffic management system will be in place at the start of construction providing motorists real-time traveler information so they can make informed travel decisions. This system includes fixed and portable variable message signs to provide motorists approaching the work zone with real-time travel conditions so they can choose to divert to an alternate route. The real-time traveler information will also be available at deldot.gov/map and on DeIDOT's mobile app.

Get the DeIDOT App

DeIDOT's free app provides up-to-the-minute, reliable traffic data that comes directly from DeIDOT's 24/7 Transportation Management Center. There is a Restore the Corridor link on the app as well as an interactive travel map to:

- View live video from over 150 traffic cameras
- View roadway message signs
- See travel times for the heaviest-traveled roadways
- Access 24-hour real-time travel advisories (incidents) and traffic flow



DART information is also right at your fingertips including trip planning, real-time bus information, and the convenience of paying your fare with your phone.



Stay Up-to-Date

There are several ways to stay up-to-date on Restore the Corridor. The project website RestoreTheCorridor.com will have all the latest news, alerts and public meeting information. You can also sign up on the website to receive project-specific emails and text messages for traffic alerts and project updates.

DeIDOT's social media accounts, Facebook and Twitter, will be posting project alerts and updates.



Tips for Driving Safely in Work Zones

- Expect the unexpected
- Slow down
- Don't tailgate
- Watch for construction workers and equipment
- Pay attention to work zone signs
- Obey posted speed limit
- Stay alert
- Stay focused and avoid distractions
- Schedule extra time
- Be patient and stay calm



Fender Bender? Move It – It's the Law!

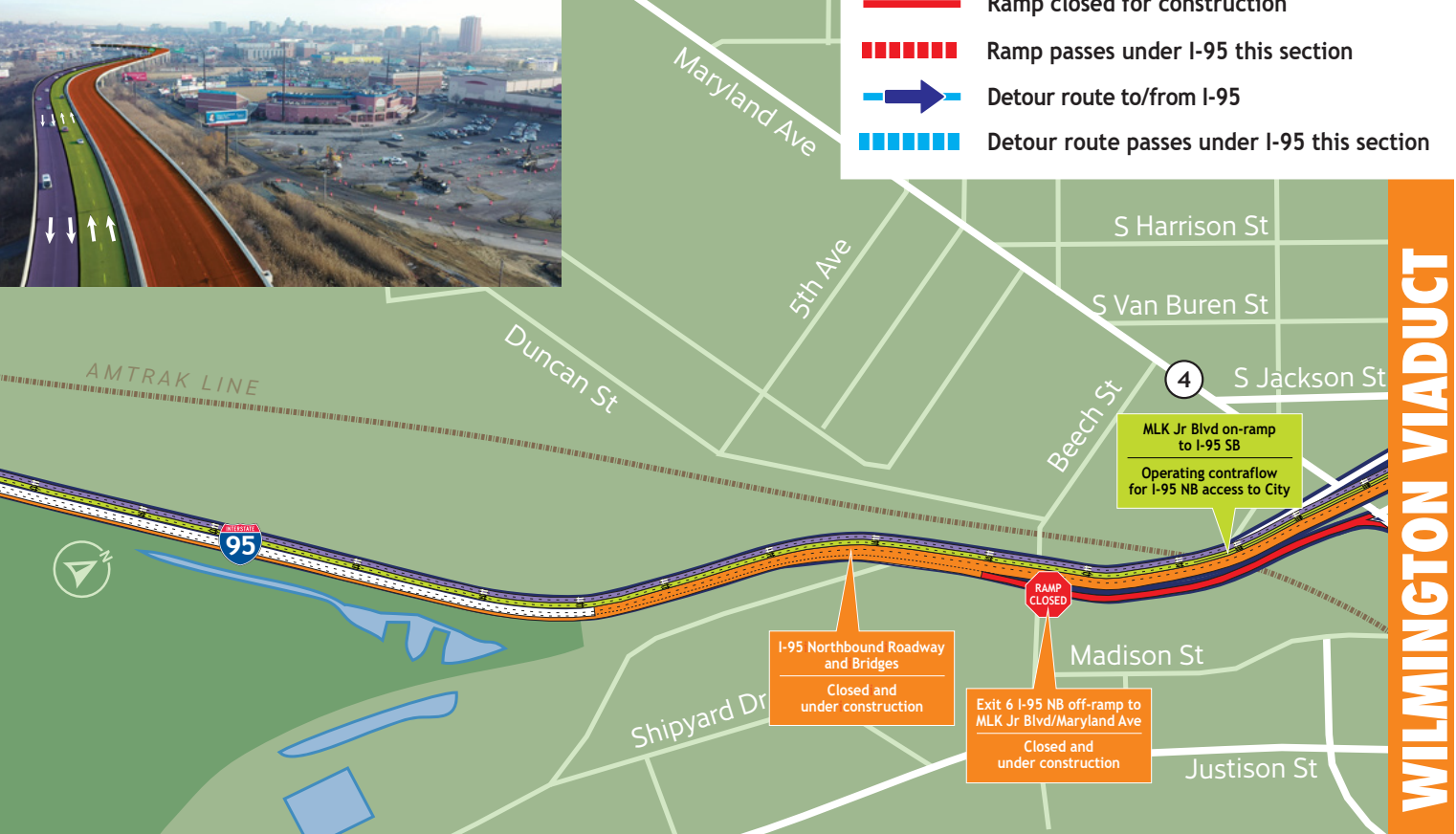
If you are involved in a non-injury crash, Delaware's "Move It" law requires motorists move their vehicles, or have them moved, out of the roadway as quickly as possible. You should pull over to the shoulder of the road or the closest safe area to exchange pertinent information. This helps to reduce the number of secondary crashes and helps improve the traffic flow. There are some exceptions, such as vehicles carrying hazardous materials, which might cause more harm if moved, and vehicles with injured or trapped occupants.

WHAT TO EXPECT DURING PHASE 1A CONSTRUCTION

Lane Closures and Traffic Patterns

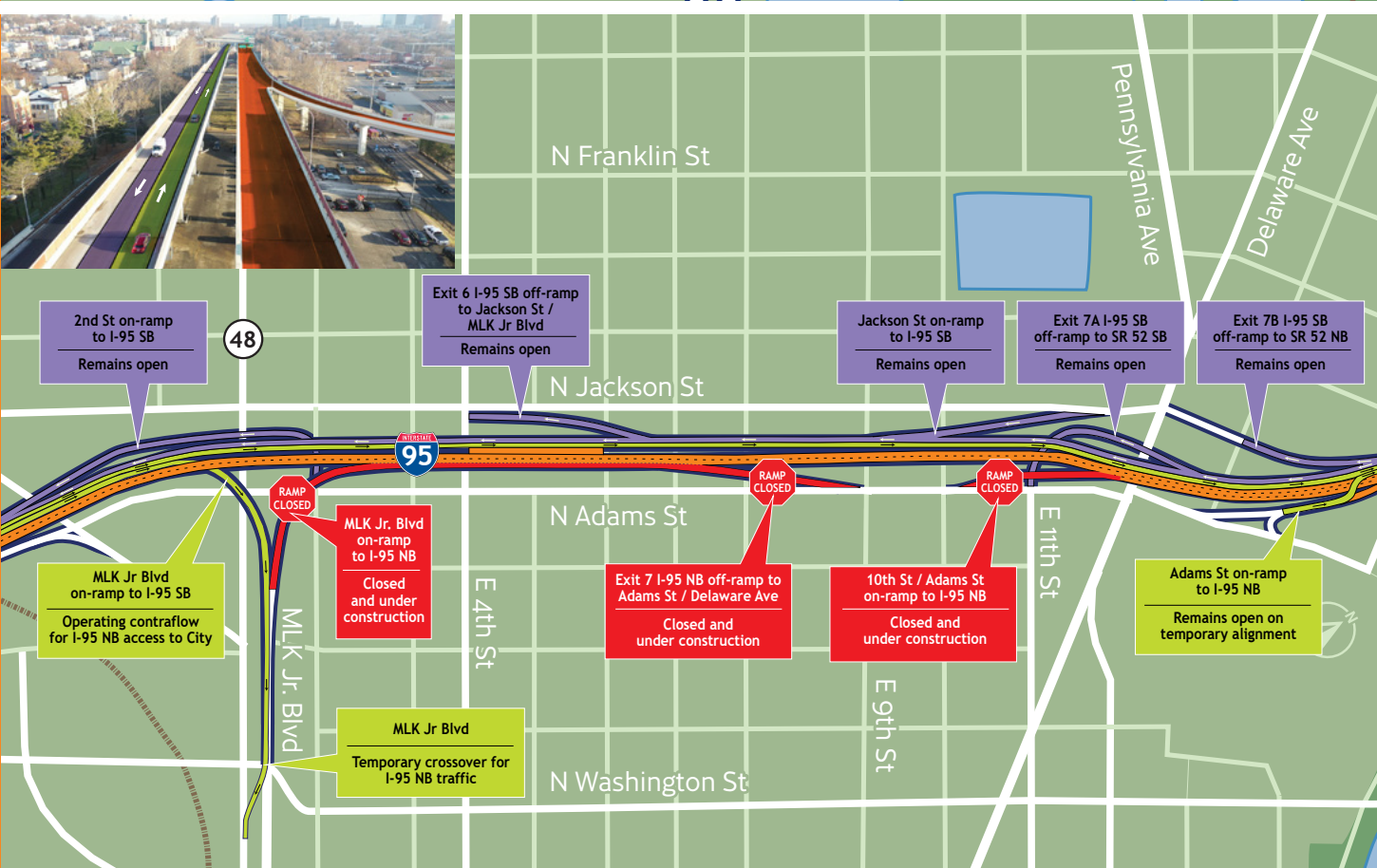
- LEGEND**
- Area Under Construction
 - Open Northbound Travel Lane(s)/Ramp(s)
 - Open Southbound Travel Lane(s)/Ramp(s)
 - Ramp closed for construction
 - Ramp passes under I-95 this section
 - Detour route to/from I-95
 - Detour route passes under I-95 this section

SOUTH WILMINGTON



WILMINGTON VIADUCT

DOWNTOWN

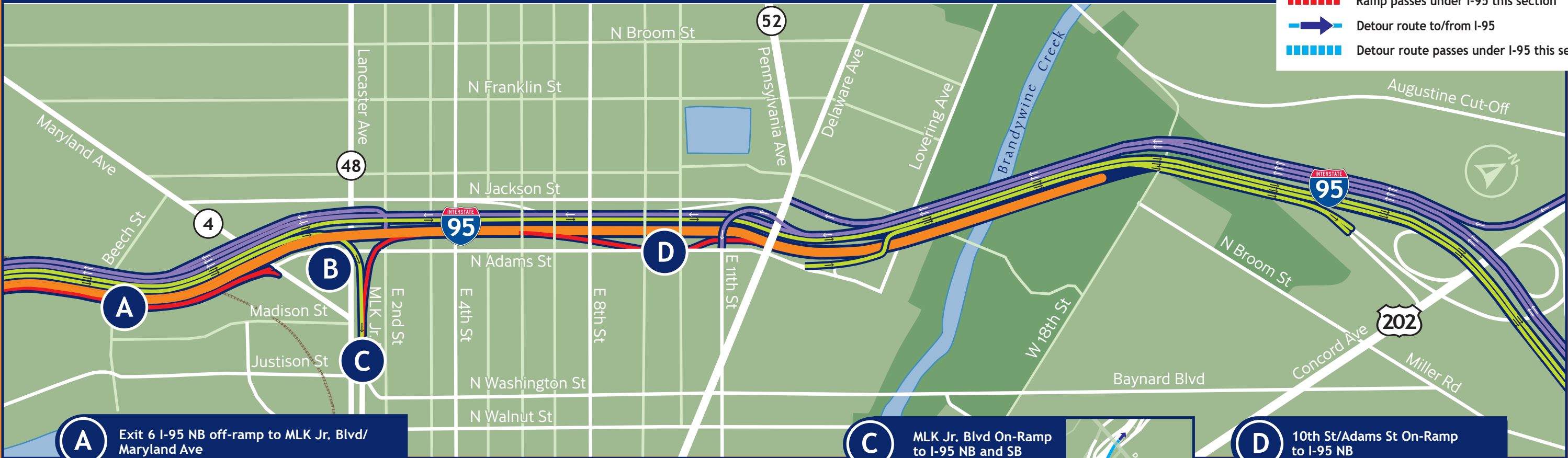


BRANDYWINE RIVER BRIDGE

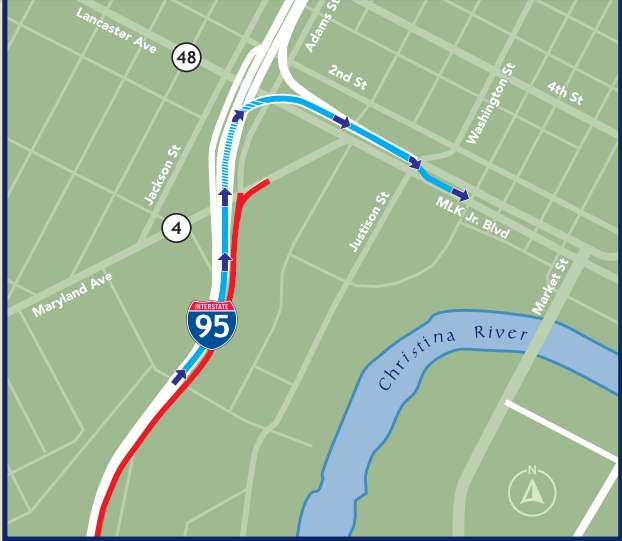
Ramp Closures and Detours (Phase 1A Only)

LEGEND

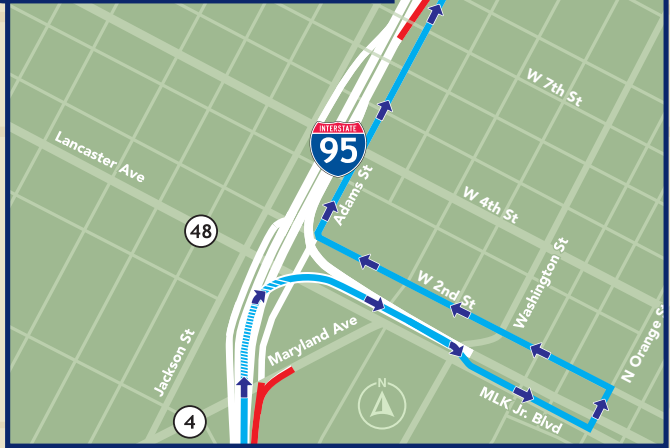
- Area Under Construction
- Open Northbound Travel Lane(s)/Ramp(s)
- Open Southbound Travel Lane(s)/Ramp(s)
- Ramp closed for construction
- Ramp passes under I-95 this section
- Detour route to/from I-95
- Detour route passes under I-95 this section



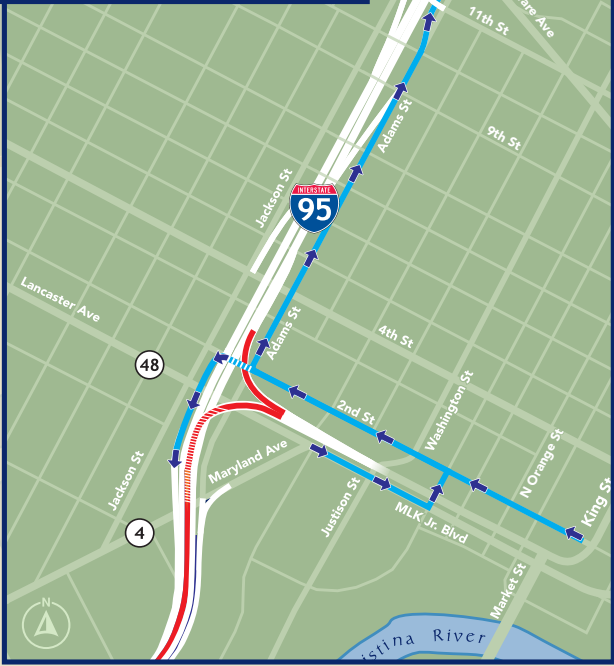
A Exit 6 I-95 NB off-ramp to MLK Jr. Blvd/ Maryland Ave



B Exit 7 I-95 NB off-ramp to Adams St/Delaware Ave



C MLK Jr. Blvd On-Ramp to I-95 NB and SB



D 10th St/Adams St On-Ramp to I-95 NB



Getting Around During Construction

DeIDOT understands this project will be disruptive to residents, businesses, and travelers. We encourage you to review how the project may impact you and consider what alternate travel routes and commuting options are available during this multi-year project. DART, Delaware Commute Solutions, and SEPTA are ready to assist customers who are seeking to avoid construction-related delays.

Alternate Routes

While I-95 remains open for the duration of the project, there will be heavy delays along the corridor.

Motorists who are just passing through the state are encouraged to use I-495 as an alternate. Those traveling to Wilmington can also use I-495 or US 13. DeIDOT has posted signage directing motorists into the city.

Commuting Solutions

Delaware Commute Solutions

Delaware Commute Solutions (DECS), formerly RideShare Delaware, provides free benefits and incentives to those who use clean modes of commuting instead of driving alone. Clean commuting includes taking transit, teleworking, walking, biking, carpooling and vanpooling, or having compressed work weeks.

Incentives and benefits for Delaware Commute Solutions members include a tailored personal commute plan, rewards for recording a clean commute, Guaranteed Ride Home reimbursements (in the cases of unexpected events), access to potential carpool matching, special promotions and monthly drawings. Members can download the free DECS app for iOS or Android to become members, record their clean commuting trips and access rewards. For questions or additional information, please contact general@delawarecommutesolutions.org, visit DelawareCommuteSolutions.org or call 888-RIDEMATCH.

DART

DART First State has made service changes and developed strategies to help riders navigate the I-95 construction and to help mitigate traffic impacts. Some service has been re-routed away from I-95 to travel I-495 and/or US 13 into Wilmington. A new bus lane has been constructed on portions of northbound US 13 to allow for expedited travel.

Riders can download the free DART Transit app or visit DartFirstState.com to access the trip planner, view bus routes and bus stops, and check

real-time bus information. Riders can also download the free **DART Pass** app, a mobile fare payment option for touchless payment. Both the DART Pass and DART Transit app are available for iOS and Android.



For more information, please visit DartFirstState.com or call 1-800-652-DART. Follow DART on social media to keep updated with the latest rider information and alerts.

SEPTA

SEPTA Train service is one of the fastest options for commuters during the I-95 construction. The Wilmington/Newark Line serves all four Delaware train stations: Claymont, Wilmington, Fairplay at Churchmans Crossing and Newark. For schedule information, please visit septa.org or contact SEPTA at 215-580-7800.



Wilmington is Open for Business!

Throughout the Restore the Corridor project, Wilmington is open for business and ready to welcome you. Come downtown to experience:

- Award-winning restaurants
- Tax-free shopping
- Historic and cultural attractions
- Riverfront Wilmington
- The Riverwalk and Jack A. Markell (J.A.M.) Trail
- The Gateway to the Brandywine Valley National Scenic Byway

Stay on top of the best ways to reach downtown Wilmington at RestoreTheCorridor.com. For ideas on what to see and do, go to VisitWilmingtonDE.com. A live chat provides you with tailored visitor assistance.



Delaware Department
of Transportation



For more information on the project, visit RestoreTheCorridor.com or contact DeIDOT Community Relations at 302-760-2080 or info@restorethecorridor.com